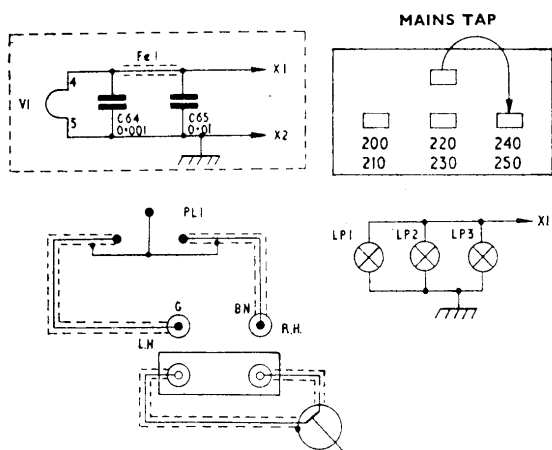


**General Description:** Nine-valve (including tuning indicator, plus metal rectifier), three-waveband, A.M./F.M. stereo radiogram.

**Power Supply:** A.C. mains, 200–250 volts, 50 c/s., 74 watts (radio).

**Wavebands:** M.W. 182–545 m.; L.W. 1200–2000 m.; V.H.F. 86–100 Mc/s.

**Dismantling:** To gain access to units: (1) disconnect equipment from



mains supply; (2) remove F.M. aerial plug and screws securing back cover; (3) Two separate chassis, one carrying power supply unit and twin amplifiers, the other radio tuner and controls.

**Amplifier and Power Unit:** Disconnect all plug and socket connections associated with power unit. Unscrew four securing screws. Raise chassis slightly and withdraw from cabinet.

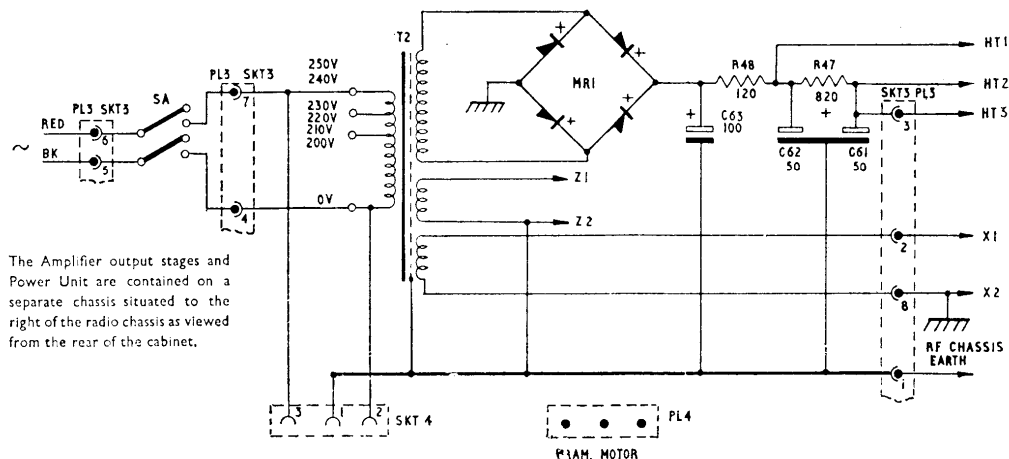
**Radio Unit:** Remove pick-up plug from top of chassis; octal plug and 4-pin A.F. plug from power unit chassis. Remove tag boards containing external dipole and tape sockets, each is secured by two screws. Unscrew two bolts securing chassis to cabinet. Chassis may then be removed by sliding it backwards, taking care to avoid damage to the ferrite rod assembly.

**Auto-change Unit:** Auto-changer is removed by unscrewing three securing bolts located on unit base plate. Plug-in pick-up and mains supply leads must also be disconnected.

**Valve Analysis:** Measurements taken under no-signal conditions, on F.M. band. Figures in brackets refer to A.M. operation.

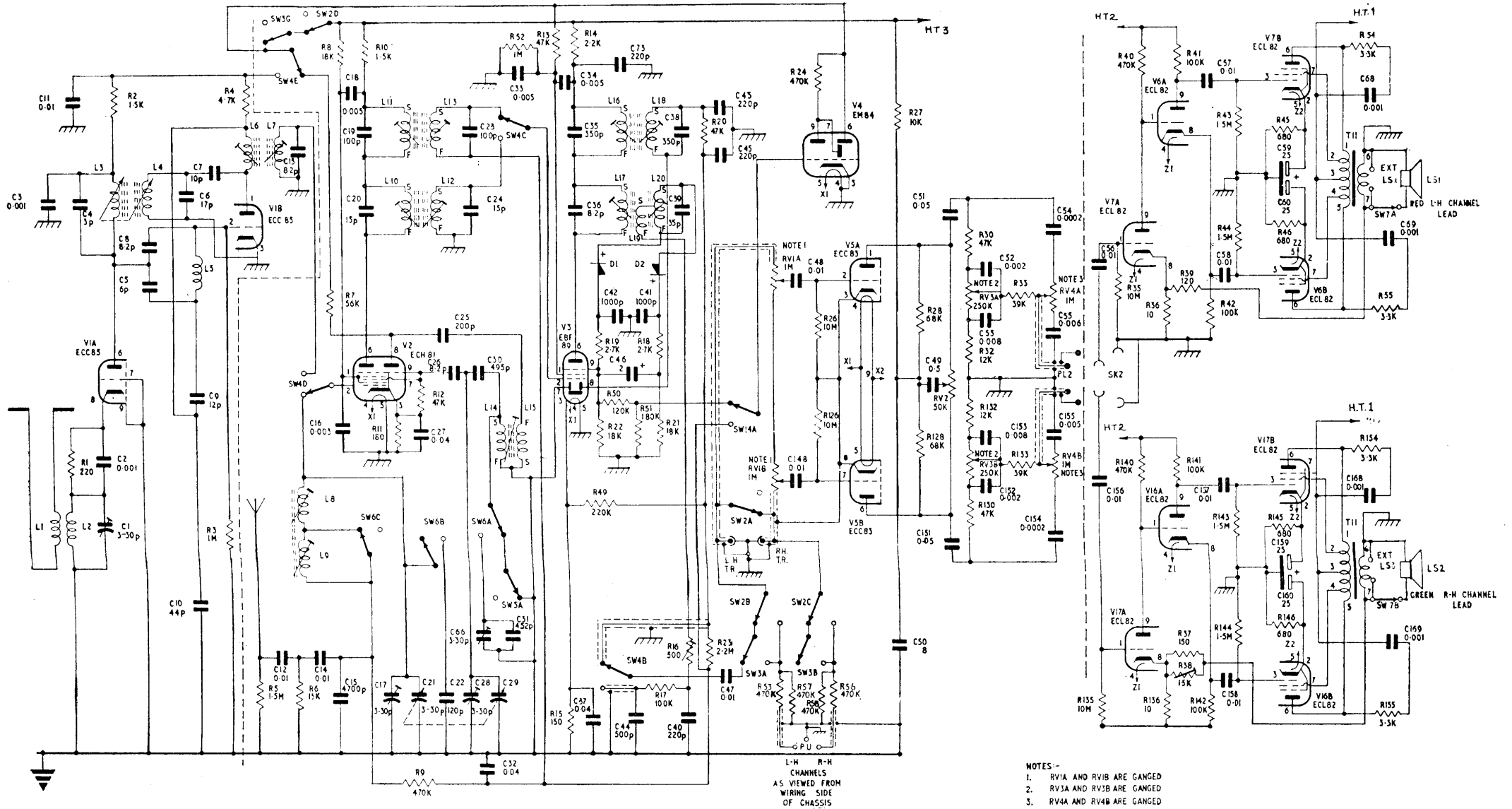
Valve	Anode, volts	Anode, mA.	Screen, volts	Screen, mA.	Cathode, volts	Cathode, mA.
(V <sub>1</sub> A) ECC85	208	8.2	—	—	—	—
(V <sub>1</sub> B) ECC85	120	4.4	—	—	—	—
(V <sub>2</sub> ) ECH81	205 (225)	7.9 (3.0)	120 (116)	4.9 (6.1)	2.4 (2.2)	12.8 (11.85)
(triode)	—(65)	—(2.75)	—	—	—	—
(V <sub>3</sub> ) EBF89	190 (205)	8.2 (8.2)	106 (115)	2.4 (2.4)	1.7 (1.7)	10.6 (10.6)
(V <sub>4</sub> ) EM84	56 (65)	0.35 (0.35)	215* (225*)	0.8* (0.91)	—	—
(V <sub>5</sub> A, B) ECC83	120 (125)	9.9 (10)	—	—	—	—
(V <sub>6</sub> A, 16A) ECL82	147	2.3	—	—	—	—
(V <sub>7</sub> A, 17A) ECL82	55	0.3	—	—	—	—
(V <sub>6</sub> B, 7B, 16B, 17B) ECL82	245 (250)	24 (25)	245 (250)	4.5 (5)	20 (20.5)	29 (30.3)

\* Target. Metal rectifier, Westinghouse E.C.3.



The Amplifier output stages and Power Unit are contained on a separate chassis situated to the right of the radio chassis as viewed from the rear of the cabinet.

POWER UNIT—DYNATRON MODEL RG21



CIRCUIT DIAGRAM—DYNATRON "HENLEY" MODEL RG21