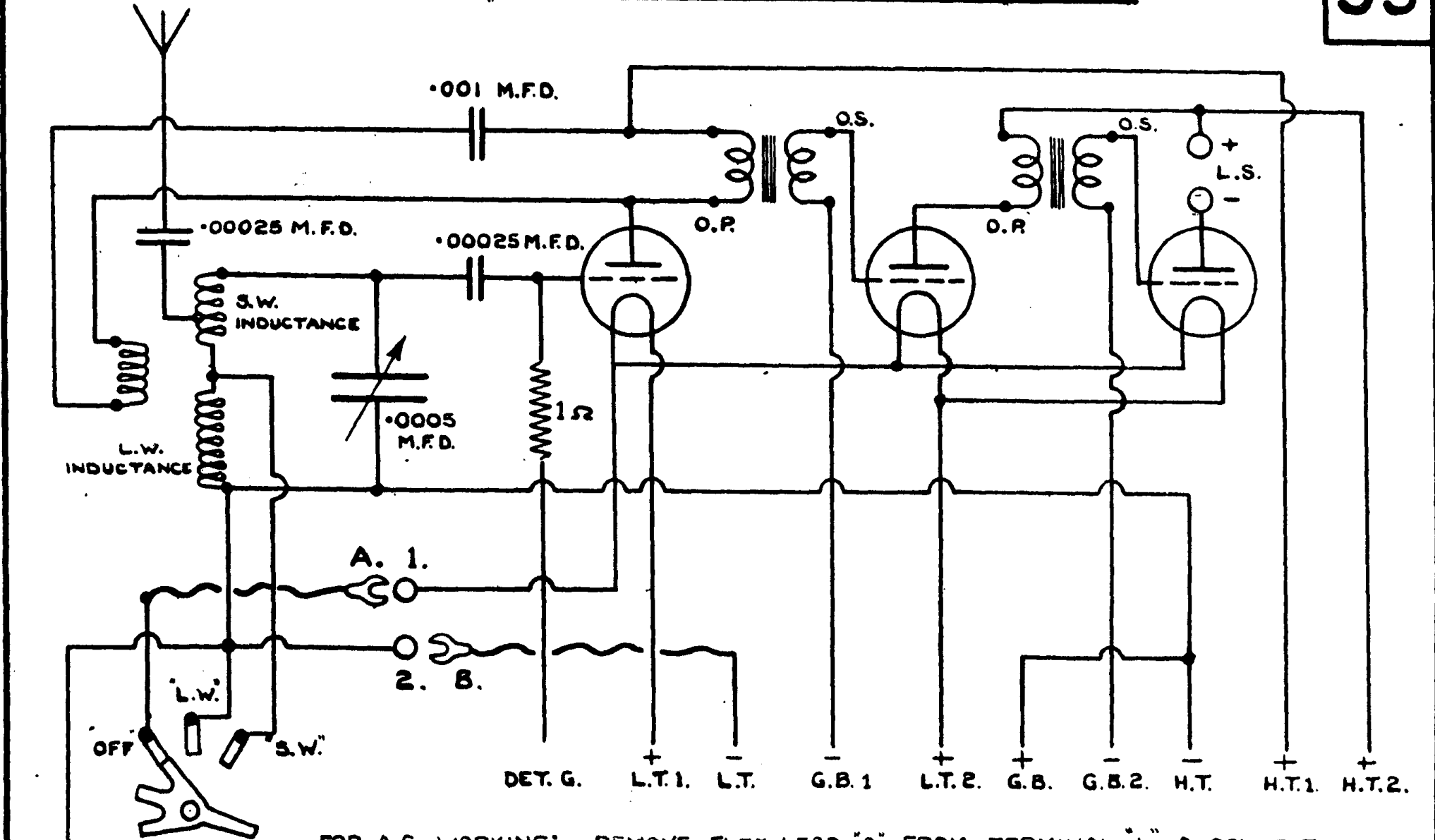


DIAGRAM OF CONNECTIONS RECEIVER TYPE 37

35



FOR A.C. WORKING: REMOVE FLEX LEAD "A" FROM TERMINAL "1" & CONNECT IT TO CATHODE OF DETECTOR, TRANSFER FLEX LEAD "B" FROM TERMINAL "2" TO TERMINAL "1."

FOR D.C. & BATTERY WORKING: FLEX LEADS A. & B. CONNECTED AS IN DIAGRAM.