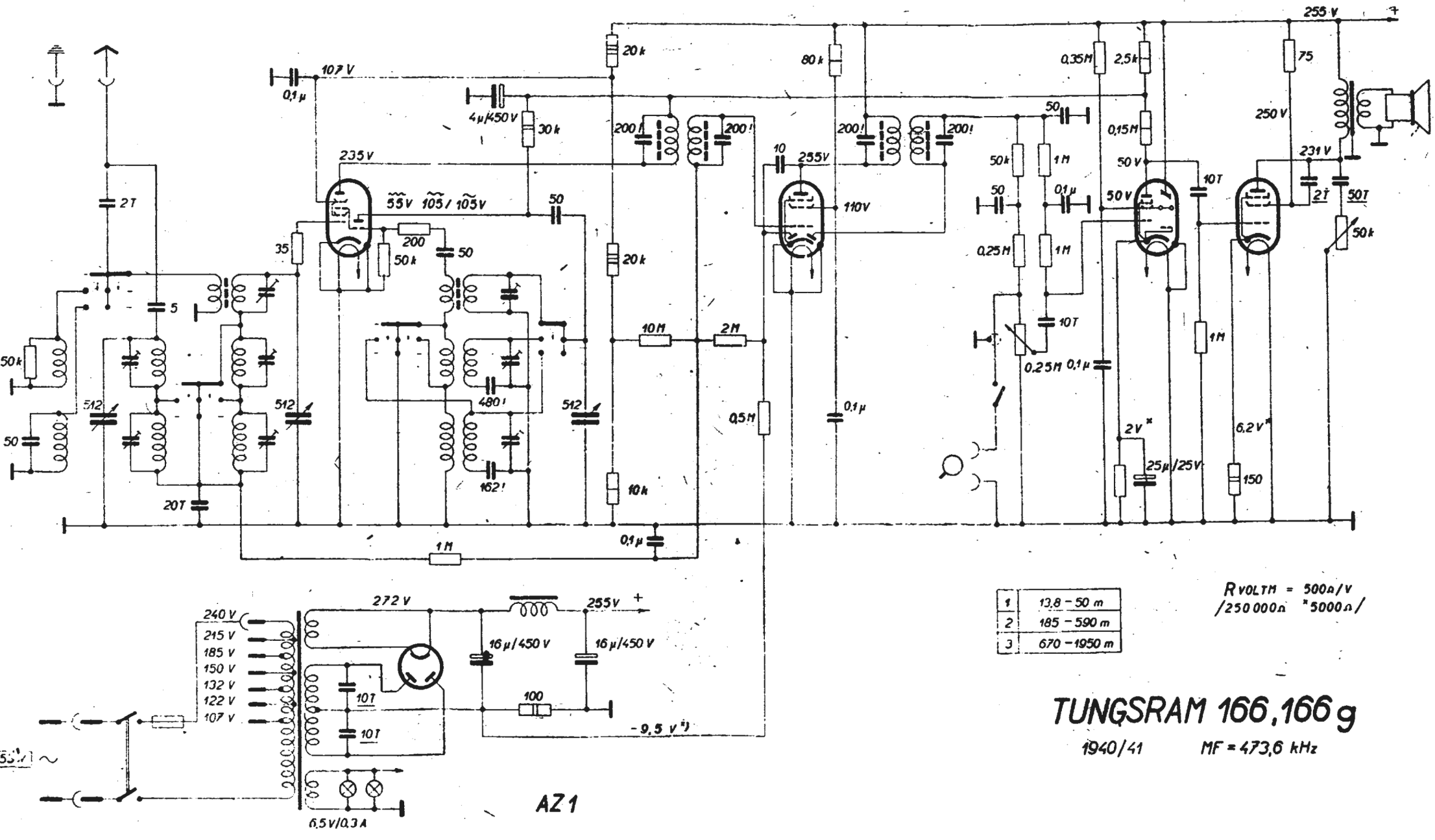


ECH 3

EBF 2

EFM 1 EL 3



1	13,8 - 50 m
2	185 - 590 m
3	670 - 1950 m

$R_{VOLTH} = 500 \Omega / V$
 $/ 250 000 \Omega \quad * 5000 \Omega /$

TUNGSRAM 166,166 g

1940/41

MF = 473,6 kHz

AZ 1