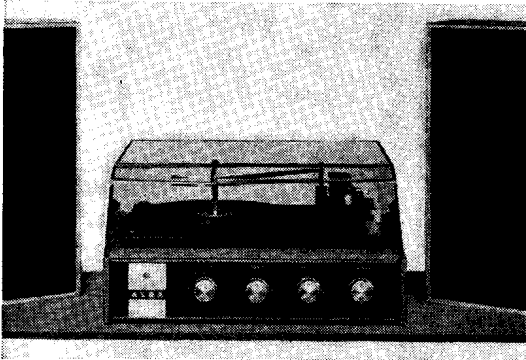


E R T SERVICE CHART 1820 ALBA UA 552, 552A



This service chart is copyright. It is not to be resold or reproduced, in part or in whole, without permission.

THE TWO ALBA mains powered stereo amplifier/players covered by this *Service Chart* employ similar circuits. They diverge only in so far that the RP9A chassis used in model 552A has a 5-pin DIN socket and an additional four resistors. This extra circuitry facilitates the use of a tape recorder in both record and playback modes. Both left and right hand channels are identical and employ five transistors in each. Controls—ganged—are volume, treble, bass

and balance.
Mains. 220-240V 50Hz.
Fuse. FS1 150mA anti surge.
Transistors. Left hand channel: TR1 BC149 or BC109, TR2 BC158 or BC186, TR3 BC108, TR4 AC128, TR5 AC176. Right hand channel: TR6-TR10 same as TR1-TR5.
Pilot lamp. 6.3V 115mA.
Output. 3W per channel.
Speakers. Separate enclosures each contain a 6 × 4in. elliptical 15ohm speaker.
Socket facility. 5-pin DIN for tape recorder input and output. (UA 552A only).
Record unit. Garrard CC10.
Cartridge. GC38.
Dimensions. 13 × 10½ × 6½in.
Price. £45.86.

RESISTORS

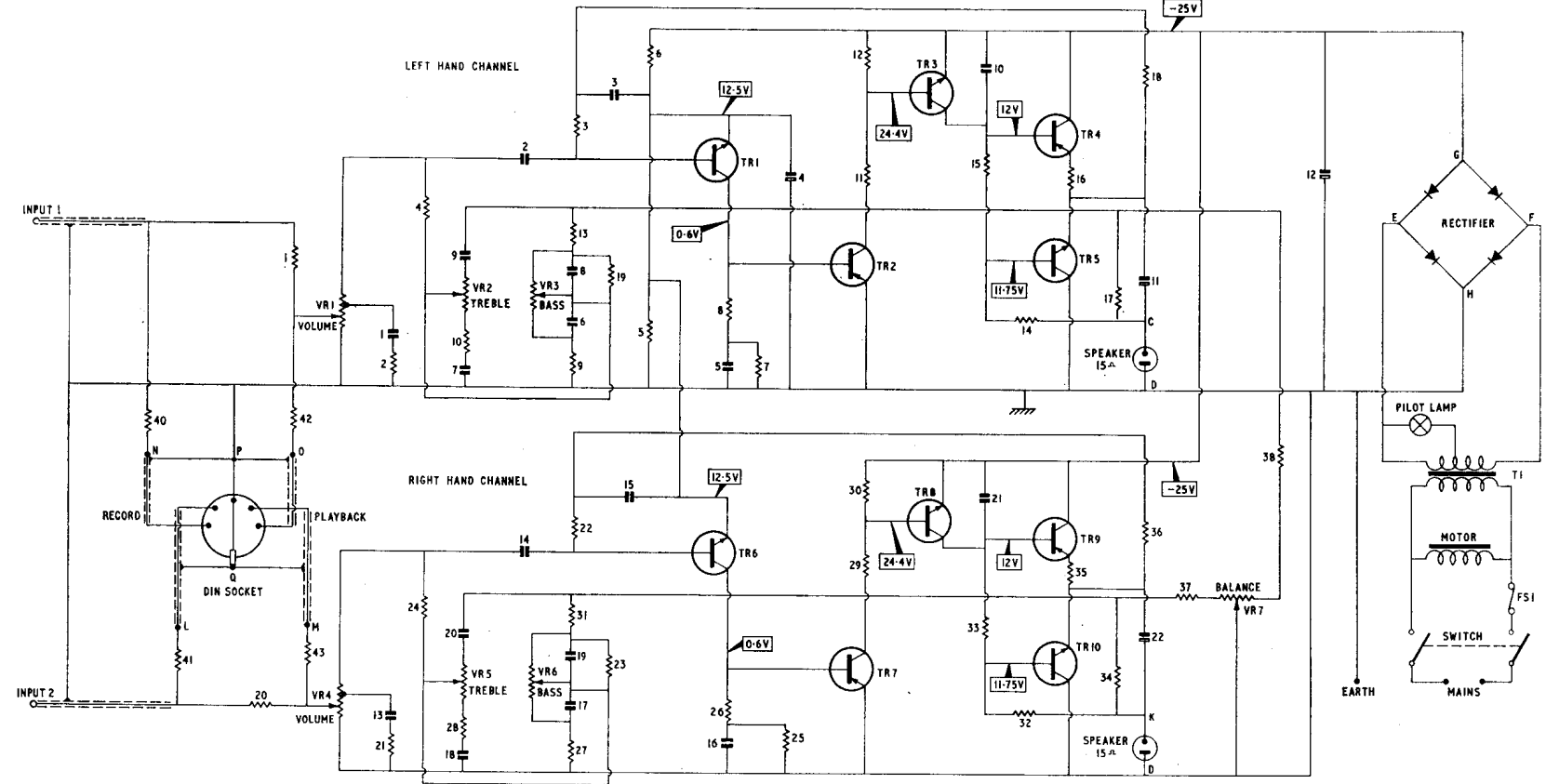
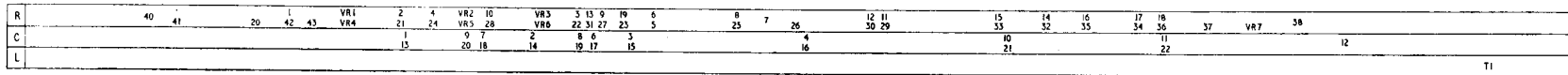
R1	1M5	B1
R2	22K	B1
R3	560K	B1
R4	820K	B1
R5	4K7	B1
R6	4K7	B1
R7	47K	B2
R8	470	B2
R9	2K2	B2
R10	100	B1
R11	4K7	B2
R12	4K7	B2
R13	22K	B1
R14	680	B2
R15	12	B2
R16	1	B2
R17	1K	B2
R18	270K	B2
R19	33K	B2
R20	1M5	B1
R21	22K	B1
R22	560K	B1
R23	22K	B2
R24	33K	B2
R25	820K	B1
R26	47K	B1
R27	470	B2
R28	2K2	B2
R29	100	B2
R30	4K7	B1
R31	4K7	B2
R32	22K	B2
R33	680	B2
R34	12	B2
R35	1K	B2
R36	1	B2
R37	270K	B2
R38	330	B2
R39	330	B2
R40	470K	B1
R41	470K	B1
R42	330K	B1
R43	330K	B1

VARIABLES

VR1	220K	B1
VR2	22K	B1
VR3	100K	B2
VR4	220K	B1
VR5	22K	B1
VR6	100K	B2
VR7	5K	B2

CAPACITORS

C1	10KpF	B1
C2	220KpF	B1
C3	220KpF	B1
C4	400µF	B1
C5	5KpF	B2
C6	100KpF	B2
C7	47KpF	B2
C8	10KpF	B2
C9	3K9pF	B1
C10	3K9pF	B2
C11	400µF	B2
C12	3000µF	B2
C13	10KpF	A2
C14	220KpF	B1
C15	220KpF	B1
C16	5KpF	B2
C17	100KpF	B2
C18	47KpF	B2
C19	10KpF	B2
C20	3K9pF	B1
C21	3K9pF	B1
C22	400µF	B2



Manufacturer. Alba (Radio and Television) Ltd.

Service department. 62-68 Tabernacle Street, London EC2. Tel: 01-253 1322.

SERVICE NOTES

Voltages given on the circuit diagram were obtained from data supplied by the manufacturers. They were measured under quiescent conditions with a 20,000ohm/V meter.

The values of R1 and R20 given in the table apply when a crystal cartridge is being used. Some models employ a ceramic cartridge and in this case R1 and R20 each become 1M-ohm.

For chassis type RP9 the DIN socket and resistors R40-R43 and their associated connections should be ignored.

Audio checks. Before carrying out any of the following checks, set controls to mid-position. Feed in a 10kHz signal to each channel and adjust balance control to give equal measured outputs from each channel.

Sensitivity. Feed in a 1kHz signal via a 1KpF capacitor to either channel. The signal voltage required to produce 2.74V RMS across a 15ohm resistive speaker load—equivalent to 500mW—is approximately: 300mV with volume control at maximum and 2V with volume control at mid-position.

Tone controls. Change input signal frequency to 10kHz and maintain volume control at its mid setting. Treble maximum should be +14.5dB and minimum -13dB.

Change signal frequency to 100Hz. Bass maximum should be +10dB and minimum -7dB.

DISMANTLING

Removing turntable. Withdraw record spindle and carefully take out the centre disc from turntable mat. Remove turntable retaining clip, note location then lift off turntable.

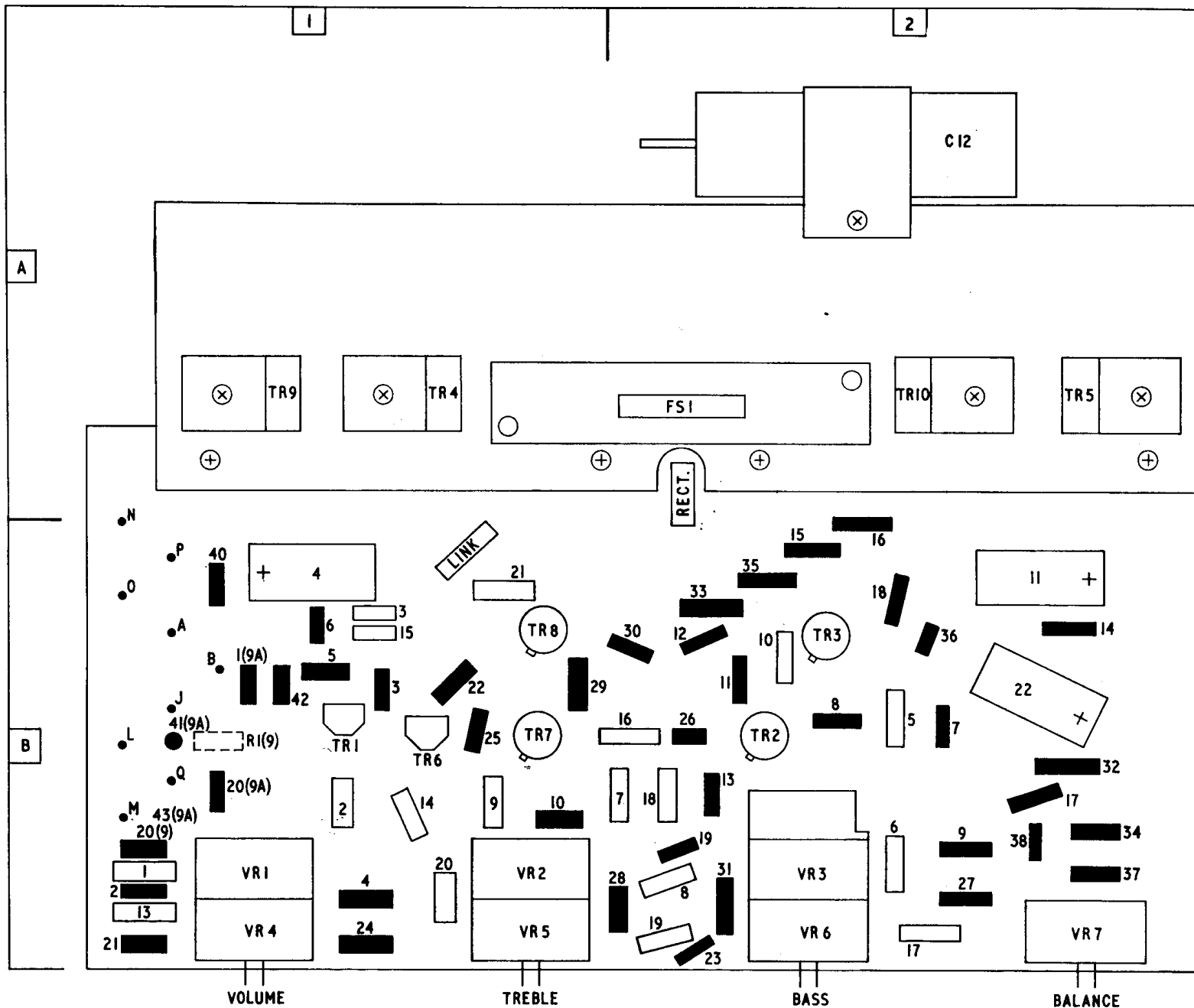
Autochanger removal. Remove four 1½in. mounting screws and plastics washers from the rubber bushes in the changer unit plate. The assembly can now be lifted clear of the case to the extent of connecting leads.

To remove completely, unsolder pick-up leads from unit and motor switch leads from mains transformer.

When replacing, ensure the motor leads are well away from the amplifier input.

Chassis removal. Pull-off control knobs then unscrew and remove two 4BA nuts and washers securing control panel bracket to front of case. Release mains lead from clamp, unscrew and remove woodscrew—adjacent to fuse holder—securing chassis to case base.

The chassis complete with mains transformer can now be removed to the extent of the leads to the speaker socket panel.



Printed panel viewed from component side. Resistors are in solid black, capacitors in outline only