



WIRELESS 2.4GHz  
PC MINI-BRIDGE  
WITH STEREO HEADSET

USER MANUAL

# Important Information

---

## CAUTION

RISK OF ELECTRIC SHOCK.  
DO NOT OPEN.

**Caution:** To reduce the risk of electric shock, do not remove cover (or back). No user serviceable parts inside. Refer servicing to qualified service personnel.

**WARNING:** To reduce the risk of fire or electric shock, do not expose this product to rain or moisture. The apparatus shall not be exposed to dripping or splashing. No objects filled with liquids, such as vases, shall be placed on the apparatus.

FCC Regulations state that unauthorized changes or modifications to this equipment may void the user's authority to operate it.

This device complies with Part 15 of the FCC rules. Operation is subject to the following two conditions:

- (1) This device may not cause harmful interference
- (2) This device must accept any interference received, including interference that may cause undesired operation.

**RF Exposure Warning:** This equipment must be installed and operated in accordance with provided instructions and the antenna(s) used for this transmitter must be installed to provide a separation distance of at least 20 cm from all persons and must not be co-located or operating in conjunction with any other antenna or transmitter. End-users and installers must be provide with antenna installation instructions and transmitter operating conditions for satisfying RF exposure compliance.

### INDUSTRY CANADA REGULATORY INFORMATION

Operation is subject to the following two conditions:

- (1) This device may not cause harmful interference
- (2) This device must accept any interference received, including interference that may cause undesired operation.

The user is cautioned that this device should be used only as specified within this manual to meet RF exposure requirements. Use of this device in a manner inconsistent with this manual could lead to excessive RF exposure conditions.

This Class B digital apparatus complies with Canadian ICES-003.

Cet appareil numérique de la classe B est conforme à la norme NMB-003 du Canada.

## Important Safety Instructions

1. Read these instructions.
2. Keep these instructions.
3. Heed all warnings.
4. Follow all instructions.
5. Do not use this apparatus near water.
6. Clean only with dry cloth.
7. Do not block any ventilation openings. Install in accordance with the manufacturer's instructions.
8. Do not install near any heat sources such as radiators, heat registers, stoves, or other apparatus (including amplifiers) that produce heat.
9. Protect the power cord from being walked on or pinched particularly at plugs, convenience receptacles, and the point where they exit from the apparatus.
10. Unplug this apparatus during lightning storms or when unused for long periods of time.
11. Refer all servicing to qualified service personnel. Servicing is required when the apparatus has been damaged in any way, such as power-supply cord or plug is damaged, liquid has been spilled or objects have fallen into the apparatus, the apparatus has been exposed to rain or moisture, does not operate normally, or has been dropped.

## PRODUCT INFORMATION

Keep your sales receipt to obtain warranty parts and service and for proof of purchase. Attach it here and record the model number in case you need it. These numbers are located on the product.

Model No.:

Purchase Date:

Dealer/Address/Phone:

<b>WELCOME!</b> .....	<b>3</b>
Features .....	3
What's in the package? .....	4
<b>RECEIVER BUTTONS AND JACKS</b> .....	<b>4</b>
<b>TRANSMITTER BUTTONS AND JACKS</b> .....	<b>5</b>
<b>INDICATOR STATUS</b> .....	<b>5</b>
<b>CONNECTING THE TRANSMITTER</b> .....	<b>6</b>
<b>LISTENING TO MUSIC</b> .....	<b>7</b>
Playing .....	7
Skip Forward .....	7
Skip Back .....	7
Adjusting the Volume .....	7
<b>CHARGING</b> .....	<b>8</b>
<b>SETTING UP SKYPE</b> .....	<b>9</b>
<b>TROUBLESHOOTING</b> .....	<b>10</b>
<b>LISTEN SAFELY!</b> .....	<b>10</b>
<b>TECHNICAL SPECIFICATIONS</b> .....	<b>11</b>
<b>12 MONTH LIMITED WARRANTY</b> .....	<b>12</b>

---

## **WELCOME!**

Congratulations on your purchase of the 2.4GHz Wireless USB Mini Bridge Stereo Headset audio and communication system. The ARWH2 uses the latest in wireless transmission, 2.4GHz digital technology, that lets you enjoy crystal clear, uncompressed digital audio up to 30 feet away from the transmitter. Easy, push button wireless pairing makes it simple to get started.

This manual covers various connection options and detailed operating instructions for setup and use of the ARWH2. If, after having reviewed the instructions, you have any questions, please call toll free 1 800 732 6866 or visit [www.araccessories.com](http://www.araccessories.com).

### **FEATURES**

2.4GHz digital technology lets you enjoy crystal clear audio wirelessly up to 30 feet away from the transmitter\*.

Convenient power, volume, and music and communication controls located on the receiver

Listen to music from Windows Media Player® or iTunes® and control how it plays right from the receiver

Answer calls from Windows Messenger® or Skype™

Easy pairing of transmitter and receiver

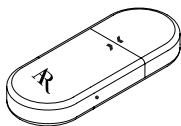
\*Range may vary according to environment.

### WHAT'S IN THE PACKAGE?

Before you get started using your wireless headset, take a moment to get familiar with the package contents.



Receiver

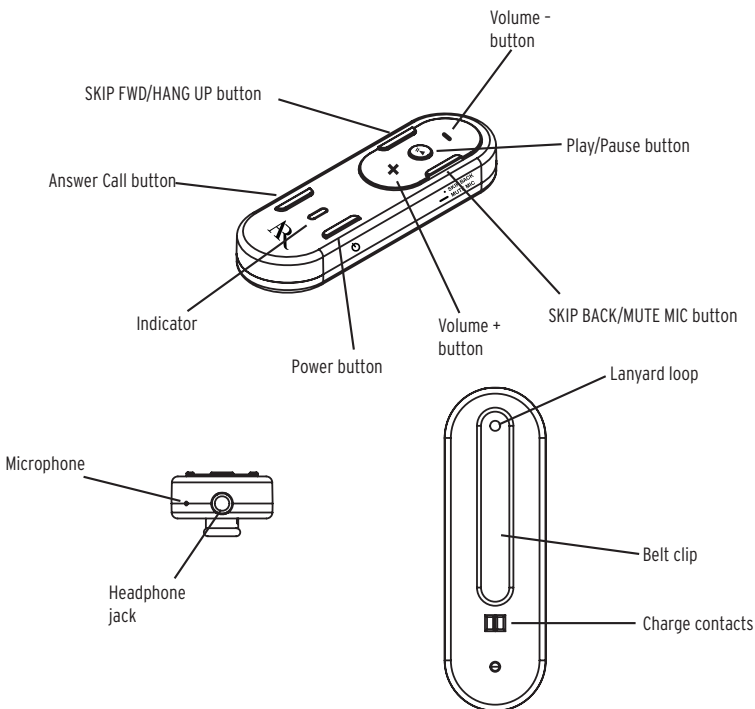


Transmitter and protective cap

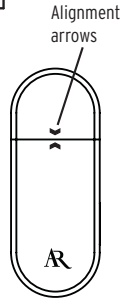
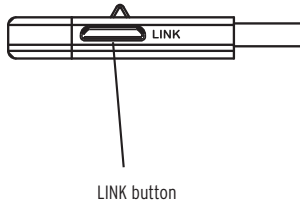
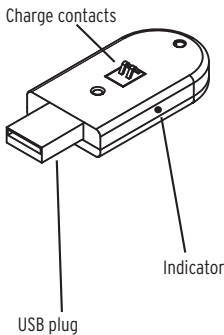
**PLUS:**

Carrying case  
Earbuds  
Lanyard

## Receiver Buttons and Jacks



## TRANSMITTER BUTTONS AND JACKS



Transmitter with protective cap attached

## INDICATOR STATUS

### RECEIVER

INDICATOR COLORS	STATUS
Blue (steady)	Power is on, units are linked
Blue (flashing)	Power is on, units not linked
Green (flashing)	Microphone is muted
Red/Blue (flashing)	Initial pairing setup
Red (steady)	Low battery
Red (flashing)	Charging

Note: When storing or transporting the transmitter, make sure to put the protective cap back on the USB plug.

Align the arrows on the transmitter and cap as shown above.

### TRANSMITTER

INDICATOR COLORS	STATUS
Blue (steady)	Power is on, units are linked
Blue (flashing)	Power is on, units not linked

### CONNECTING THE TRANSMITTER

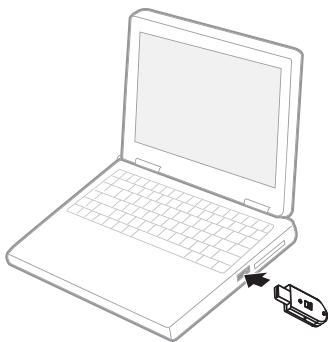
The ARWH2 requires no software to setup, so you can start using the unit right away.

1. Plug the transmitter USB plug into an available USB port on your computer.
2. Press the Power button on the receiver to turn it on. The indicator comes on and turns blue when the receiver and transmitter are linked.

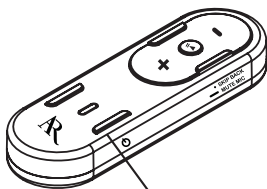
Note: The transmitter and receiver are pre linked for communication at the factory, but if the indicator on the receiver flashes blue when you turn it on, the units may need to be linked. To link them, press and hold the receiver's Power button and the transmitter's LINK button for 3 seconds. The indicator turns solid blue when both units are linked.

3. Plug your headphones or the included earbuds into the headphone jack on the receiver.
4. Open your music or communication software on your computer, and your ARWH2 is now ready to use.

Note: The headphone jack on the receiver uses a 3.5mm standard headphone plug, so if you want to use a headset or earpiece from your cell phone, you will need to use an adapter.



Connecting the transmitter to a laptop



Power button on the receiver



LINK button on the transmitter

## **LISTENING TO MUSIC**

The ARWH2 is automatically set up to control iTunes® and Windows® Media Player. Simply open your music software on your computer, and you can skip or go back to the previous song, pause, or play music using the receiver.

### **PLAYING**

Press the Play/Pause button on the receiver to pause music.

### **SKIP FORWARD**

Press the SKIP FWD button to skip to the next track.

### **SKIP BACK**

Press the SKIP BACK button to skip back to the previous track.

### **ADJUSTING THE VOLUME**

Press the Volume + or Volume - buttons to adjust the volume.

## **ANSWERING A CALL**

If you receive a call using Skype™ or Windows Messenger®, you can answer it using the receiver. A microphone is placed near the headphone jack for your convenience.

Note: You'll still need to use Skype or Windows Messenger to dial out. Some additional setup may be necessary to use Skype. See page 9.

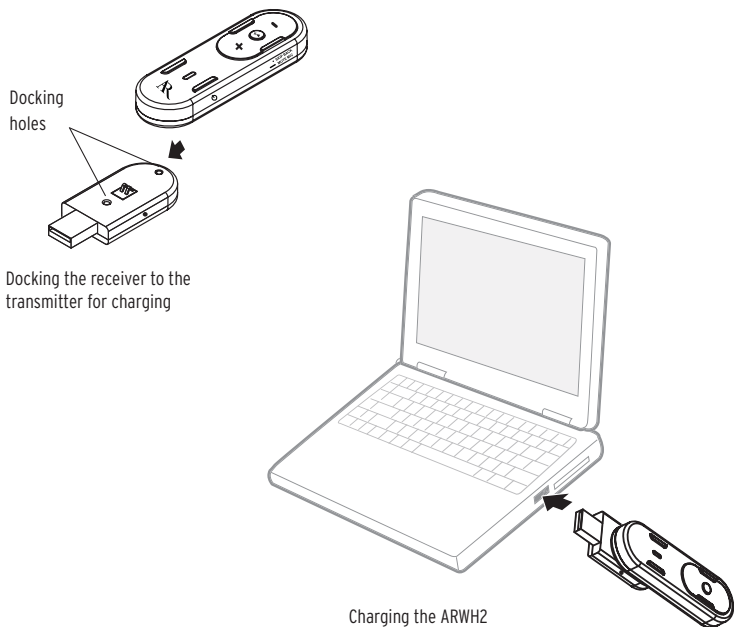
1. When you receive a call, the call will beep through, similar to call waiting. Press and hold the Answer Call button to answer the call. If you're listening to music, it will automatically be put on hold.
2. To mute the microphone at any time during the call, press and hold the MUTE MIC button. While muted, the indicator flashes green.
3. When finished with the call, press and hold the HANG UP button, and your music will begin playing again.

### CHARGING

1. Attach the ARWH2 receiver to the transmitter as shown below, making sure the docking pins on the receiver match up to the holes on the transmitter, until it clicks into place. Also make sure the charge contacts on both units match up properly. You may need to move the belt clip slightly to do this.
2. Plug the combined ARWH2 unit into an available USB port on your computer. The indicator on the receiver flashes red when charging.

Charging the battery fully takes a few hours and the battery should last about 4 hours per charge.

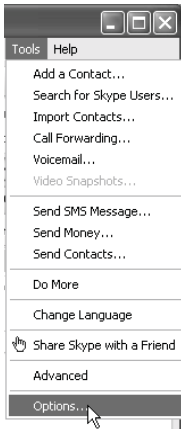
The indicator on the receiver turns solid red when the battery is low.



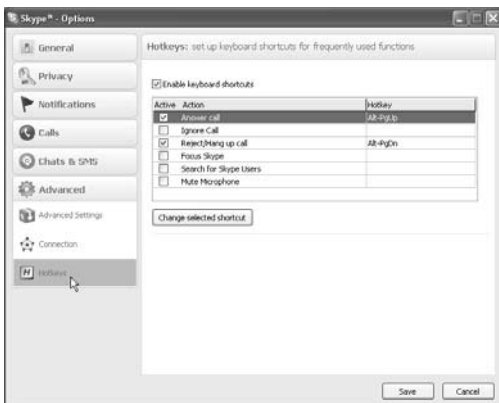


## SETTING UP SKYPE

Most of the settings for Skype™ are automatically configured by the ARWH2, but in order to use all of the features on the receiver, the following few steps must also be set up.



1. In the Skype Main menu at the top of the screen, click Tools and then choose Options.
2. In the Options menu, click the Advanced tab on the left side of the menu to open the Advanced menu items beneath it.
3. Click Hotkeys under the Advanced menu. The Hotkeys menu appears.
4. Check the Enable keyboard shortcuts box at the top of the menu.
5. Finally, click the Save button at the bottom of the window.



### TROUBLESHOOTING

The following troubleshooting guide takes you through some of the more common problems associated with the installation and/or operation of a wireless system. If the problem persists, please call toll free 1 800 732 6866 or visit [www.araccessories.com](http://www.araccessories.com).

#### NO POWER

- Make sure the receiver is charged and that the transmitter is properly connected to your computer. Try another USB port and use one directly on your computer, if possible (e.g. not through a hub).

#### NO SOUND

- Make sure the receiver is charged. If the indicator is red, the battery is low.
- Check that your music or communications software is transmitting sound as it normally should. Make sure the sound is not muted through the software.
- The ARWH2 is not set as the default audio device in your PC's system setup. Use the audio settings in Windows® under Sounds and Audio Devices to select the ARWH2 as the audio output.
- Confirm that the receiver is turned on and linked to the transmitter (the indicator is steady blue). If the indicator is flashing blue, the receiver is not linked to the transmitter. Press and hold the LINK button on the transmitter and the Power button on the receiver for 3 seconds to link the units.

#### INTERRUPTED SOUND

- Make sure the receiver is charged. If the indicator is red, the battery is low.
- You may be out of range. Move closer to the transmitter. Sending the signal through certain materials, such as glass, tile, and metal, can decrease the effective transmitting distance of the system.

#### SKYPE ISN'T WORKING RIGHT

- Make sure Skype is set up correctly in the Tools menu. See page 9 for details on how to enable keyboard shortcuts.

### LISTEN SAFELY!

Enjoy your earphones at a safe volume. Avoid or limit the amount of time you listen at higher volumes – permanent hearing loss may occur if the earphones are used at too high a volume. If you experience a ringing in your ears, or your own voice and other sounds seem muffled, stop using the earphones and consult a hearing professional.

## TECHNICAL SPECIFICATIONS

### TRANSMITTER

Omni directional 2.4GHz digital broadcast

Range	30 ft.*
USB type	USB A 2.0

### RECEIVER

Headphone output	3.5 mm
Microphone	Integrated, omni directional
Battery life	3 hours (at typical listening volume)
Battery type	190mAH Lithium polymer

### EARBUDS

Speaker drivers	15mm Neodymium
Impedance	16 $\Omega$ $\leq$ 20% at 1kHz
Sensitivity	86dB $\pm$ 2dB at 1kHz
Frequency response	20Hz 20kHz
Plug	3.5 mm stereo
Cord length	3.9' (1.15 m)

\* Maximum range; results may vary according to environment.

Windows Media Player is a registered trademark of Microsoft Corporation.

Windows Messenger is a registered trademark of Microsoft Corporation.

iTunes is a registered trademark of Apple Inc.

Skype is a trademark of Skype Limited.

## 12 MONTH LIMITED WARRANTY

Audiovox Electronics Corporation (the "Company") warrants to the original retail purchaser of this product that should this product or any part thereof, under normal use and conditions, be proven defective in material or workmanship within 12 months from the date of original purchase, such defect(s) will be repaired or replaced (at the Company's option) without charge for parts and repair labor. To obtain repair or replacement within the terms of this Warranty, the product along with any accessories included in the original packaging is to be delivered with proof of warranty coverage (e.g. dated bill of sale), specification of defect(s), transportation prepaid, to the Company at the address shown below. Do not return this product to the Retailer.

This Warranty is not transferable and does not cover product purchased, serviced or used outside the United States or Canada. The warranty does not extend to the elimination of externally generated static or noise, to costs incurred for the installation, removal or reinstallation of the product.

The warranty does not apply to any product or part thereof which, in the opinion of the company, has suffered or been damaged through alteration, improper installation, mishandling, misuse, neglect, accident or exposure to moisture. This warranty does not apply to damage caused by an AC adapter not provided with the product, or by leaving non-rechargeable batteries in the product while plugged into an AC outlet.

THE EXTENT OF THE COMPANY'S LIABILITY UNDER THIS WARRANTY IS LIMITED TO THE REPAIR OR REPLACEMENT PROVIDED ABOVE AND, IN NO EVENT, SHALL THE COMPANY'S LIABILITY EXCEED THE PURCHASE PRICE PAID BY PURCHASER FOR THE PRODUCT.

This Warranty is in lieu of all other express warranties or liabilities. ANY IMPLIED WARRANTIES, INCLUDING ANY IMPLIED WARRANTY OF MERCHANTABILITY OR FITNESS FOR A PARTICULAR PURPOSE, SHALL BE LIMITED TO DURATION OF THIS WARRANTY. ANY ACTION FOR BREACH OF ANY WARRANTY HEREUNDER, INCLUDING ANY IMPLIED WARRANTY, MUST BE BROUGHT WITHIN A PERIOD OF 24 MONTHS FROM THE DATE OF ORIGINAL PURCHASE. IN NO CASE SHALL THE COMPANY BE LIABLE FOR ANY CONSEQUENTIAL OR INCIDENTAL DAMAGES WHATSOEVER. No person or representative is authorized to assume for the Company any liability other than expressed herein in connection with the sale of this product.

Some states/provinces do not allow limitations on how long an implied warranty lasts or the exclusion or limitation of incidental or consequential damage so the above limitations or exclusions may not apply to you. This Warranty gives you specific legal rights and you may also have other rights which vary from state/province to state/province.

U.S.A.: Audiovox Electronics Corporation, 150 Marcus Blvd., Hauppauge, New York 11788

CANADA: Audiovox Return Center, c/o Genco, 6685 Kennedy Road, Unit 3, Door 16, Mississauga, Ontario L5T 3A5

© 2007 Audiovox Accessories Corporation  
111 Congressional Blvd., Suite 350  
Carmel, IN 46032

[www.araccessories.com](http://www.araccessories.com)

Trademark(s) ® Registered      ARWH2 US IB 00