



**CDC-X2670** YL  
**CDC-X4670** YL

# SERVICE MANUAL

---

STEREO CAR CD RECEIVER

BASIC CD MECHANISM: TN-CCD1001-13J

---

- Replace this Service manual with "Revision Publishing" when it is issued.

**aiwa**  
S/M Code No. 09-004-422-3T5

SIMPLE

DATA

# ELECTRICAL MAIN PARTS LIST - 1/4

NOTE: The characters in the suffix column indicate the part usage.

REF.NO	PARTS NO.	KANRI NO.	DESCRIPTION	SUFFIX
4670YL		XX		A
2670YL		XX		B
C	641	87-010-196-080	CHIP CAPACITOR,0.1-25	
C	642	87-010-196-080	CHIP CAPACITOR,0.1-25	
C	702	87-010-314-080	C-CAP,S 22P-50V	
C	701	87-010-315-080	C-CAP,S 27P-50 CH	
C	706	87-010-497-040	CAP,E 4.7-35 GAS	
C	711	87-010-322-080	C-CAP,S 100P-50 CH	
C	712	87-010-322-080	C-CAP,S 100P-50 CH	
C	763	87-010-196-080	CHIP CAPACITOR,0.1-25	
C	761	87-010-555-040	CAP,E 100-10 GAS	
C	771	87-012-156-080	C-CAP,S 220P-50 CH	
D	641	87-070-136-080	ZENER,MTZJ5.1B	
D	701	87-020-331-080	CHIP-DIODE,DAN202K	
D	703	87-070-136-080	ZENER,MTZJ5.1B	
D	712	87-020-331-080	CHIP-DIODE,DAN202K	
D	713	87-020-331-080	CHIP-DIODE,DAN202K	
D	714	87-020-331-080	CHIP-DIODE,DAN202K	
D	716	87-020-331-080	CHIP-DIODE,DAN202K	
D	852	87-017-932-080	ZENER,MTJ6.2B	
D	858	87-017-932-080	ZENER,MTJ6.2B	
D	853	87-017-932-080	ZENER,MTJ6.2B	
D	859	87-017-932-080	ZENER,MTJ6.2B	
D	855	87-017-932-080	ZENER,MTJ6.2B	
D	857	87-017-932-080	ZENER,MTJ6.2B	
D	854	87-017-932-080	ZENER,MTJ6.2B	
D	856	87-017-932-080	ZENER,MTJ6.2B	
IC	641	88-KT1-606-080	IC,PST994D	
IC	701	87-A21-645-030	C-IC,LC72358N-9935	
LED	702	87-027-262-010	LEDE,TLR-124 (RED)	AB
SW	701	87-A91-070-010	SW,TACT SKHHLV	
SW	702	87-A91-152-010	SW,SL 1-1-2 SSSS212-11-A	
X	701	87-A70-175-010	VIB,XTAL 4.5MHZ AT-49	
C	208	87-010-176-080	C-CAP,S 680P-50 SL	
C	203	87-010-178-080	CHIP CAP 1000P	
C	207	87-010-195-080	C-CAP,S 0.068-25 F	
C	206	87-010-492-040	CAP,E 0.33-50 GAS	
C	202	87-010-553-040	CAP,E 47-16 GAS	
C	201	87-010-553-040	CAP,E 47-16 GAS	
C	209	87-010-992-080	C-CAP,S 0.047-25 B	
C	205	87-016-460-080	C-CAP,S 0.22-16 B	
C	204	87-016-669-080	C-CAP,S 0.1-25 K B	
C	212	87-010-180-080	C-CER 1500P	
C	215	87-010-182-080	C-CAP,S 2200P-50 B	
C	218	87-010-198-080	CAP, CHIP 0.022	
C	211	87-010-498-040	CAP,E 10-16 GAS	
C	213	87-010-992-080	C-CAP,S 0.047-25 B	
C	219	87-012-157-080	C-CAP,S 330P-50 CH	
C	216	87-016-460-080	C-CAP,S 0.22-16 B	
C	210	87-016-669-080	C-CAP,S 0.1-25 K B	
C	214	87-016-669-080	C-CAP,S 0.1-25 K B	
C	217	87-016-669-080	C-CAP,S 0.1-25 K B	
C	223	87-010-067-040	CAP,E 0.1-50 5L	
C	220	87-010-184-080	CHIP CAPACITOR 3300P(K)	
C	225	87-010-184-080	CHIP CAPACITOR 3300P(K)	
C	221	87-010-322-080	C-CAP,S 100P-50 CH	
C	222	87-010-492-040	CAP,E 0.33-50 GAS	
C	226	87-010-497-040	CAP,E 4.7-35 GAS	
C	229	87-010-498-040	CAP,E 10-16 GAS	
C	224	87-010-553-040	CAP,E 47-16 GAS	
C	227	87-010-555-040	CAP,E 100-10 GAS	
C	228	87-016-669-080	C-CAP,S 0.1-25 K B	
C	236	87-010-067-040	CAP,E 0.1-50 5L	
C	234	87-010-193-080	CHIP CAPACITOR,0.033	
C	238	87-010-197-080	CAP, CHIP 0.01 DM	
C	237	87-010-553-040	CAP,E 47-16 GAS	
C	231	87-010-555-040	CAP,E 100-10 GAS	
C	233	87-010-555-040	CAP,E 100-10 GAS	
C	235	87-010-992-080	C-CAP,S 0.047-25 B	
C	232	87-016-669-080	C-CAP,S 0.1-25 K B	
C	230	87-016-669-080	C-CAP,S 0.1-25 K B	
C	240	87-016-669-080	C-CAP,S 0.1-25 K B	
C	258	87-010-150-080	C-CAP,S 6P-50 CH	
C	256	87-010-186-080	CAP,CHIP 4700P	
C	259	87-010-316-080	C-CAP,S 33P-50 CH	
C	251	87-010-555-040	CAP,E 100-10 GAS	
C	250	87-010-805-080	CAP, S 1-16	
C	252	87-016-669-080	C-CAP,S 0.1-25 K B	
C	254	87-016-669-080	C-CAP,S 0.1-25 K B	
C	253	87-016-669-080	C-CAP,S 0.1-25 K B	
C	269	87-010-180-080	C-CER 1500P	
C	267	87-010-498-040	CAP,E 10-16 GAS	

# ELECTRICAL MAIN PARTS LIST - 2/4

C	268	87-010-498-040	CAP, E 10-16 GAS	
C	263	87-010-555-040	CAP, E 100-10 GAS	
C	264	87-010-555-040	CAP, E 100-10 GAS	
C	261	87-012-156-080	C-CAP, S 220P-50 CH	
C	262	87-016-669-080	C-CAP, S 0.1-25 K B	
C	265	87-016-669-080	C-CAP, S 0.1-25 K B	
C	266	87-016-669-080	C-CAP, S 0.1-25 K B	
C	272	87-010-154-080	CAP CHIP 10P	
C	271	87-010-154-080	CAP CHIP 10P	
C	270	87-010-180-080	C-CER 1500P	
C	281	87-010-555-040	CAP, E 100-10 GAS	
C	282	87-016-669-080	C-CAP, S 0.1-25 K B	
C	280	87-A10-189-040	CAP, E 220-10	
CON	201	87-A60-859-010	CONN, 12P TKC-F12X-K1	
CON	202	87-A60-860-010	CONN, 14P TKC-F14X-K1	
IC	201	87-A20-446-010	C-IC, LA9241ML	
IC	202	87-A21-319-010	C-IC, LC78622NE	
IC	203	87-A21-488-040	C-IC, LA6556	
Q	202	87-026-210-080	CHIP-TR, DTC144EK	
Q	205	87-026-210-080	CHIP-TR, DTC144EK	
Q	203	87-026-210-080	CHIP-TR, DTC144EK	
Q	204	87-026-210-080	CHIP-TR, DTC144EK	
Q	201	87-A30-289-040	C-TR, 2SA1037AK(R)	
Q	207	87-A30-299-080	TR, 2SB1326	
Q	206	89-324-122-080	TR, 2SC2412K	
R	242	87-022-371-080	C-RES, S 330K-1/10W F	
R	241	87-022-371-080	C-RES, S 330K-1/10W F	
X	201	81-592-641-010	VIB, CER 16.93MHZ	
C	101	87-010-178-080	CHIP CAP 1000P	
C	102	87-010-197-080	CAP, CHIP 0.01 DM	
C	106	87-010-322-080	C-CAP, S 100P-50 CH	
C	108	87-010-322-080	C-CAP, S 100P-50 CH	
C	103	87-010-495-040	CAP, E 2.2-50 GAS	
C	107	87-010-552-040	CAP, E 22-16 GAS	
C	109	87-010-553-040	CAP, E 47-16 GAS	
C	112	87-010-185-080	C-CAP, S 3900P-50 B	
C	115	87-010-196-080	CHIP CAPACITOR, 0.1-25	
C	116	87-010-196-080	CHIP CAPACITOR, 0.1-25	
C	113	87-010-197-080	CAP, CHIP 0.01 DM	
C	114	87-010-197-080	CAP, CHIP 0.01 DM	
C	110	87-010-198-080	CAP, CHIP 0.022	
C	111	87-010-553-040	CAP, E 47-16 GAS	
C	131	87-010-220-080	C-CAP, S 0.018-25 B	
C	132	87-010-220-080	C-CAP, S 0.018-25 B	
C	133	87-012-358-080	C-CAP, S 0.47-10 F Z	
C	134	87-012-358-080	C-CAP, S 0.47-10 F Z	
C	132	87-012-365-080	C-CAP, S 0.027-25VBK	
C	131	87-012-365-080	C-CAP, S 0.027-25VBK	
C	161	87-010-196-080	CHIP CAPACITOR, 0.1-25	
C	176	87-010-197-080	CAP, CHIP 0.01 DM	
C	173	87-010-322-080	C-CAP, S 100P-50 CH	
D	101	87-A40-250-080	C-DIODE, DAN217	
L	101	87-003-143-080	COIL 4.7 UH	
L	102	8Z-KT1-619-010	COIL, 68MH K7-D	
Q	109	87-A30-287-040	C-TR, DTC114TKA	
Q	107	87-A30-288-040	C-TR, DTC114YKA	
Q	105	87-A30-289-040	C-TR, 2SA1037AK(R)	
Q	102	89-324-122-080	TR, 2SC2412K	
Q	101	89-324-122-080	TR, 2SC2412K	
Q	106	89-324-122-080	TR, 2SC2412K	
Q	111	87-026-235-080	CHIP-TR, DTC114EK	
Q	161	87-A30-289-040	C-TR, 2SA1037AK(R)	
TU	101	8A-KC8-620-010	TU UNIT, FAE347-A11	
TU	101	8A-KC8-621-010	TU UNIT, FAE347-A12	AB
C	273	87-010-494-040	CAP, E 1-50 GAS	
C	274	87-010-494-040	CAP, E 1-50 GAS	
C	306	87-010-184-080	CHIP CAPACITOR 3300P(K)	
C	305	87-010-184-080	CHIP CAPACITOR 3300P(K)	
C	308	87-010-198-080	CAP, CHIP 0.022	
C	307	87-010-198-080	CAP, CHIP 0.022	
C	304	87-010-494-040	CAP, E 1-50 GAS	
C	303	87-010-494-040	CAP, E 1-50 GAS	
C	302	87-010-498-040	CAP, E 10-16 GAS	
C	301	87-010-498-040	CAP, E 10-16 GAS	
C	309	87-010-498-040	CAP, E 10-16 GAS	
C	310	87-010-498-040	CAP, E 10-16 GAS	
C	316	87-010-498-040	CAP, E 10-16 GAS	
C	315	87-010-498-040	CAP, E 10-16 GAS	
C	312	87-A11-177-080	C-CAP, S 0.15-16 K B	
C	314	87-A11-177-080	C-CAP, S 0.15-16 K B	
C	313	87-A11-177-080	C-CAP, S 0.15-16 K B	
C	311	87-A11-177-080	C-CAP, S 0.15-16 K B	
C	321	87-010-196-080	CHIP CAPACITOR, 0.1-25	
C	323	87-010-196-080	CHIP CAPACITOR, 0.1-25	
C	324	87-010-498-040	CAP, E 10-16 GAS	
C	322	87-010-555-040	CAP, E 100-10 GAS	
C	333	87-010-196-080	CHIP CAPACITOR, 0.1-25	

# ELECTRICAL MAIN PARTS LIST - 3/4

C	334	87-010-196-080	CHIP CAPACITOR,0.1-25	
C	332	87-012-358-080	C-CAP,S 0.47-10 F Z	
C	331	87-012-358-080	C-CAP,S 0.47-10 F Z	
C	354	87-010-494-040	CAP,E 1-50 GAS	
C	352	87-010-494-040	CAP,E 1-50 GAS	
C	353	87-010-494-040	CAP,E 1-50 GAS	
C	351	87-010-494-040	CAP,E 1-50 GAS	
C	452	87-010-498-040	CAP,E 10-16 GAS	
C	451	87-010-498-040	CAP,E 10-16 GAS	
C	453	87-010-498-040	CAP,E 10-16 GAS	
C	454	87-010-498-040	CAP,E 10-16 GAS	
C	457	87-012-140-080	CAP 470P	
C	458	87-012-140-080	CAP 470P	
C	455	87-012-140-080	CAP 470P	
C	456	87-012-140-080	CAP 470P	
C	551	87-010-553-040	CAP,E 47-16 GAS	
C	590	87-010-178-080	CHIP CAP 1000P	
C	835	87-010-182-080	C-CAP,S 2200P-50 B	
C	836	87-010-182-080	C-CAP,S 2200P-50 B	
C	831	87-010-494-040	CAP,E 1-50 GAS	
C	832	87-010-494-040	CAP,E 1-50 GAS	
D	331	87-A40-250-080	C-DIODE,DAN217	
D	551	87-020-331-080	CHIP-DIODE,DAN202K	
IC	301	8Z-KT1-622-010	C-IC,LC75374E	
L	461	87-003-143-080	COIL 4.7 UH	
L	831	87-003-143-080	COIL 4.7 UH	
Q	331	89-324-122-080	TR,2SC2412K	
Q	559	87-A30-282-040	C-TR,DTA114TKA	
Q	552	87-A30-287-040	C-TR,DTC114TKA	
Q	553	87-A30-287-040	C-TR,DTC114TKA	
Q	554	87-A30-287-040	C-TR,DTC114TKA	
Q	551	87-A30-287-040	C-TR,DTC114TKA	
Q	560	87-A30-287-040	C-TR,DTC114TKA	
C	365	87-010-175-080	CAP 560P	
C	368	87-010-175-080	CAP 560P	
C	367	87-010-175-080	CAP 560P	
C	366	87-010-175-080	CAP 560P	
C	361	87-012-358-080	C-CAP,S 0.47-10 F Z	
C	364	87-012-358-080	C-CAP,S 0.47-10 F Z	
C	363	87-012-358-080	C-CAP,S 0.47-10 F Z	
C	362	87-012-358-080	C-CAP,S 0.47-10 F Z	
C	516	87-010-178-080	CHIP CAP 1000P	
C	517	87-010-178-080	CHIP CAP 1000P	
C	513	87-010-196-080	CHIP CAPACITOR,0.1-25	
C	512	87-010-196-080	CHIP CAPACITOR,0.1-25	
C	515	87-010-494-040	CAP,E 1-50 GAS	
C	519	87-010-494-040	CAP,E 1-50 GAS	
C	514	87-010-553-040	CAP,E 47-16 GAS	
C	511	8A-KC7-623-000	CAP,E 2200U-16 BT (125C)	
C	534	87-012-368-080	C-CAP,S 0.1-50 F	
C	532	87-012-368-080	C-CAP,S 0.1-50 F	
C	533	87-012-368-080	C-CAP,S 0.1-50 F	
C	531	87-012-368-080	C-CAP,S 0.1-50 F	
D	506	87-001-783-080	DIODE,1N4002	
D	508	87-001-783-080	DIODE,1N4002	
D	502	87-001-783-080	DIODE,1N4002	
D	507	87-001-783-080	DIODE,1N4002	
D	504	87-001-783-080	DIODE,1N4002	
D	501	87-001-783-080	DIODE,1N4002	
D	505	87-001-783-080	DIODE,1N4002	
D	503	87-001-783-080	DIODE,1N4002	
D	571	87-A40-250-080	C-DIODE,DAN217	
D	572	87-A40-250-080	C-DIODE,DAN217	
D	573	87-A40-250-080	C-DIODE,DAN217	
D	574	87-A40-250-080	C-DIODE,DAN217	
IC	501	87-A21-562-010	IC,LA4743B	A.
IC	501	87-A21-647-010	IC,LA4735B	B.
C	612	87-010-198-080	CAP, CHIP 0.022	
C	611	87-010-553-040	CAP,E 47-16 GAS	
C	613	87-016-044-040	CAP,E 100-16 GAS	
C	621	87-010-553-040	CAP,E 47-16 GAS	
C	622	87-010-553-040	CAP,E 47-16 GAS	
C	671	87-010-198-080	CAP, CHIP 0.022	
C	674	87-010-198-080	CAP, CHIP 0.022	
C	673	87-010-553-040	CAP,E 47-16 GAS	
C	672	87-010-555-040	CAP,E 100-10 GAS	
C	682	87-010-198-080	CAP, CHIP 0.022	
C	681	87-010-553-040	CAP,E 47-16 GAS	
C	884	87-010-182-080	C-CAP,S 2200P-50 B	
C	882	87-010-182-080	C-CAP,S 2200P-50 B	
C	883	87-010-182-080	C-CAP,S 2200P-50 B	
C	881	87-010-182-080	C-CAP,S 2200P-50 B	
D	611	87-A40-624-080	ZENER,MTZJ10A	
D	621	87-A40-523-080	ZENER,MTZJ9.1B	
D	675	87-001-783-080	DIODE,1N4002	
D	674	87-001-783-080	DIODE,1N4002	
D	673	87-017-932-080	ZENER,MTJ6.2B	

# ELECTRICAL MAIN PARTS LIST - 4/4

D	671	87-020-331-080	CHIP-DIODE, DAN202K	.....
D	672	87-020-331-080	CHIP-DIODE, DAN202K	.....
D	681	87-A40-624-080	ZENER, MTZJ10A	.....
D	881	87-A40-798-010	DIODE, 1N5402 (3A/200V)	.....
F	881	8Z-KC1-621-010	FUSE, 15A 32V	AB.....
L	671	87-003-149-080	COIL, 47UH	.....
L	881	8Z-KT1-615-010	FLTR, AMORPHOUS -CHOKE	.....
Q	601	87-A30-168-010	TR, 2SB1566F	.....
Q	602	87-A30-287-040	C-TR, DTC114TKA	.....
Q	612	89-324-122-080	TR, 2SC2412K	.....
Q	623	87-026-235-080	CHIP-TR, DTC114EK	.....
Q	622	87-A30-289-040	C-TR, 2SA1037AK(R)	.....
Q	621	89-423-953-010	TR, 2SD2395F	AB.....
Q	671	87-A30-301-080	TR, 2SD1862	.....
Q	681	89-423-953-010	TR, 2SD2395F	AB.....
CNA	1	8A-KT1-631-010	CONN ASSY, 8P ISO-BLACK-A	.....
CNA	2	8A-KT1-632-010	CONN ASSY, 8P ISO-WHITE-A	.....
CON	851	88-KTA-603-010	CONN, 15P CAM-B68	.....
CON	881	8Z-KT1-611-010	CONN, 16P CAM-B51	.....
J	101	8Z-KT1-614-010	ANT, AW-002	.....
J	451	87-A61-224-010	JACK, PIN 4P XR-401	.....
J	451	87-A61-225-010	JACK, PIN 2P XR-401	AB.....
		8A-KC7-611-010	F-CABLE, 3P (AUX)	.....
C	904	87-010-177-080	C-CAP, S 820P-50 SL	.....
C	902	87-010-194-080	CAP, CHIP 0.047	.....
C	903	87-010-194-080	CAP, CHIP 0.047	.....
C	905	87-010-196-080	CHIP CAPACITOR, 0.1-25	.....
C	901	87-010-805-080	CAP, S 1-16	.....
C	971	87-010-196-080	CHIP CAPACITOR, 0.1-25	.....
CON	901	88-KTA-602-010	CONN, 15P CAM-B67	.....
D	901	87-A40-817-040	C-ZENER, STZ6.8N	.....
D	902	87-A40-817-040	C-ZENER, STZ6.8N	.....
D	971	87-A40-817-040	C-ZENER, STZ6.8N	.....
IC	901	87-A21-489-030	C-IC, LC75853NW	.....
IC	971	87-A90-951-010	RCR UNIT, SBX1971-52	.....
J	901	85-HRL-623-010	JACK, 3.5 ST BLK	.....
LCD	901	8A-KCG-610-010	LCD, AKC-16-17	.....
LCD	901	8A-KCG-612-010	LCD, AKC-16-17AUX	.....
LED	952	87-017-827-070	C-LED, SEC 1201C RED	.....
LED	951	87-017-827-070	C-LED, SEC 1201C RED	.....
LED	953	87-017-827-070	C-LED, SEC 1201C RED	.....
LED	961	87-A40-813-040	C-LED, SEC1E01C BLUE	.....
LED	962	87-A40-813-040	C-LED, SEC1E01C BLUE	.....
LED	963	87-A40-813-040	C-LED, SEC1E01C BLUE	.....
PL	901	8Z-KT1-641-010	LAMP, T-3	.....
PL	902	8Z-KT1-641-010	LAMP, T-3	.....
Q	964	87-A30-287-040	C-TR, DTC114TKA	.....
Q	963	87-A30-449-040	C-TR, DTA123YKA	.....
Q	962	87-A30-449-040	C-TR, DTA123YKA	.....
Q	961	87-A30-449-040	C-TR, DTA123YKA	.....
SW	902	87-036-251-080	SW, T CT 6X3.5 160	.....
SW	908	87-036-251-080	SW, T CT 6X3.5 160	.....
SW	903	87-036-251-080	SW, T CT 6X3.5 160	.....
SW	901	87-036-251-080	SW, T CT 6X3.5 160	.....
SW	907	87-036-251-080	SW, T CT 6X3.5 160	.....
SW	906	87-A90-001-080	C-SW, TACT SKQMAL	.....
SW	905	87-A90-001-080	C-SW, TACT SKQMAL	.....
SW	904	87-A90-001-080	C-SW, TACT SKQMAL	.....
SW	914	87-036-251-080	SW, T CT 6X3.5 160	.....
SW	918	87-036-251-080	SW, T CT 6X3.5 160	.....
SW	911	87-036-251-080	SW, T CT 6X3.5 160	.....
SW	917	87-036-251-080	SW, T CT 6X3.5 160	.....
SW	913	87-036-251-080	SW, T CT 6X3.5 160	.....
SW	916	87-036-251-080	SW, T CT 6X3.5 160	.....
SW	915	87-036-251-080	SW, T CT 6X3.5 160	.....
SW	910	87-A90-001-080	C-SW, TACT SKQMAL	.....
SW	921	87-A91-597-010	SW, RTRY SIM-026MT	.....

# MECHANICAL PARTS LIST - 1/1

NOTE: The characters in the suffix column indicate the part usage.

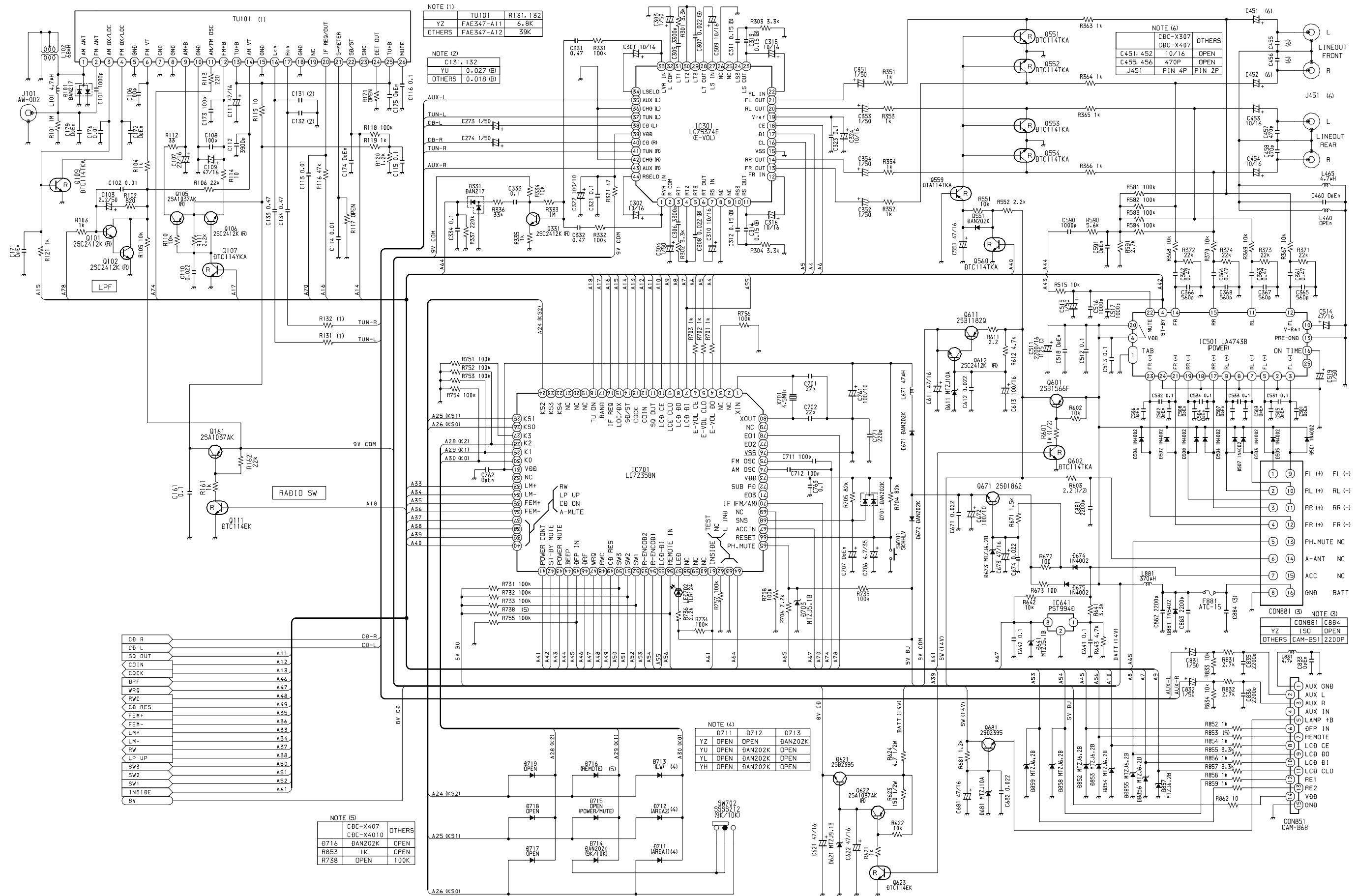
REF.NO	PARTS NO.	KANRI NO.	DESCRIPTION	SUFFIX
4670YL	.....	XX	.....	A
2670YL	.....	XX	.....	B
8A-KCF-001-010			CABI,FRONT -AC15	.....
8A-KCF-002-010			CABI,REAR -AC15	.....
8A-KCF-020-010			CABI,TRIM -AC15	AB
8A-KCF-021-010			WINDOW,SIDE L -AC15	.....
8A-KCF-022-010			WINDOW,SIDE R -AC15	.....
8A-KCG-003-110			WINDOW,LCD X307	.....
8A-KCG-004-110			WINDOW,LCD X207	.....
8A-KCG-005-110			WINDOW,LCD X3070	.....
8A-KCG-006-110			WINDOW,LCD X4010	.....
8A-KCG-007-110			WINDOW,LCD X2070	.....
8A-KCG-008-110			WINDOW,LCD X407	.....
8Z-KC2-011-210			CABI,BASE -C2	AB
8A-KC7-005-010			KNOB,RTRY -AC	.....
8A-KC7-006-010			BTN,PRE. -AC	.....
8A-KC7-007-010			BTN,SEESAW R -AC	.....
8A-KC7-011-010			BTN,CLEAR L -AC	.....
8A-KC7-013-010			BTN,CLEAR ML -AC	.....
8A-KC7-014-010			BTN,CLEAR S -AC	.....
8A-KC7-020-010			RING,RTRY -AC	.....
8A-KCF-007-010			BTN,SEESAW L -AC15	.....
8A-KCF-008-010			BTN,MONO -AC15	.....
8A-KCF-010-010			BTN,CLEAR S2 -AC15	.....
8A-KCF-011-010			BTN,DETACH -AC15	.....
8A-KCF-012-010			BTN,CLEAR EJ -AC15	.....
8A-KC7-208-010			HLDR,BTN L-AC	.....
8A-KC7-220-010			SPR-C,ROTARY -AC	.....
8A-KC7-224-010			HLDR,P-IC -AC	AB
8A-KC7-230-010			HLDR,TR2 -AC	AB
8A-KC7-231-010			HLDR,ISO-WIRE 2 -AC	.....
8A-KCF-208-010			HLDR,BTN R1 -AC15	.....
8A-KCF-210-010			HLDR,BTN R3 -AC15	.....
8A-KCF-211-010			LENS,ENCO -AC15	.....
8A-KCF-212-010			LENS,R -AC15	.....
8A-KCF-213-010			LENS,LCD -AC15	.....
8A-KCF-214-010			CASE,LCD LENS -AC15	.....
8A-KCF-215-110			HLDR,LCD -AC15	.....
8A-KCF-230-010			COVER, DUST DFP LOWRAL	AB
8Z-KC1-211-010			COVER, TOP -C	AB
8Z-KC1-212-010			COVER, BOTTOM -C	AB
8Z-KC1-213-010			CHAS,SIDE L -C	AB
8Z-KC1-214-010			CHAS,SIDE R -C	AB
8Z-KC1-236-010			COVER, CONN.BLIND -C	.....
8Z-KC2-203-210			LEVER,DFP HOOK -C2	AB
8Z-KC2-204-210			LEVER,DFP LOCK -C2	AB
8Z-KC2-221-110			SPR-C,DETACH HOOK-C2	AB
8Z-KC2-222-010			SPR-T,DETACH LOCK-C2	AB
8Z-KC2-223-010			SPR-C,DETACH -C2	.....
8Z-KC3-201-010			COVER, CD BLIND -C	AB
8Z-KC7-201-010			COVER, ISO BLIND -C	AB
8Z-KCG-201-210			CHAS,FRONT -C16	AB
8Z-KT1-239-010			CAP,LAMP BLU B	.....
87-251-073-410			SCREW,U+2.6-6	AB
87-251-100-410			U+3-16	AB
87-432-903-010			WASHER,WTE 2.6	AB
87-B10-216-010			U+2.6-4.0 ZINC BLK (BH M2.6)	AB
87-B10-259-010			UT2+3.0-10.0 W/O SLOT (BH TAP)	AB
8Z-KC1-251-010			S-SCREW,TH2.6-4.0-0.8	AB
8Z-KC1-253-010			S-SCREW,PT 2*8 BH+ BLK	.....
8Z-KY1-003-010			HLDR,BELT SW1	A
8Z-KY1-007-010			BELT, SW1	A
8Z-KY1-203-010			PLATE,BELT-HLDR -F	A
8Z-KY1-204-010			PLATE,NUT M3 -F	A
8Z-KY1-205-010			S-SCREW,HEX-SOC. M3-3.5 BLK	A
8Z-KY1-207-010			KEY,HEXAGON WRENCH-F	A
8A-KC7-611-010			F-CABLE,3P (AUX)	.....

# ACCESSORIES / PACKAGE LIST - 1/1

NOTE: The characters in the suffix column indicate the part usage.

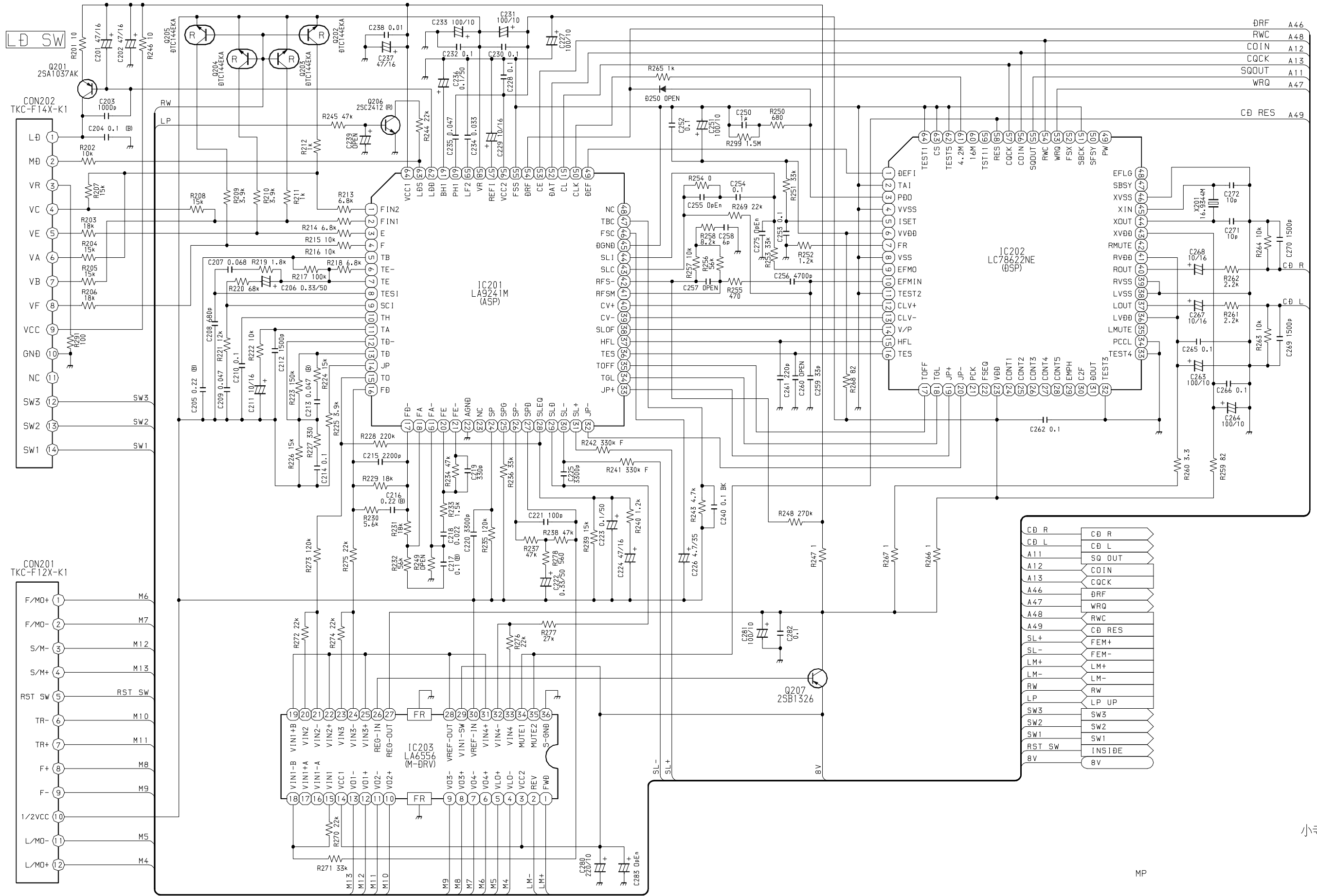
REF.NO	PARTS NO.	KANRI NO.	DESCRIPTION	SUFFIX
4670YL		XX		A
2670YL		XX		B
8A-KC7-902-010			IB, INST, YU, YL (3L, P)	
8A-KCG-901-110			IB, YU (3L) 307, 407	
8A-KCG-902-110			IB, YU (3L) 207	
8A-KCG-903-110			IB, YL (3L) 4010, 3070, 2070	
8A-KCG-904-110			IB, YZ (9L) 207	
8A-KCG-905-010			IB, INST, YZ (9L) -I	
8A-KCG-907-010			IB, YH (E CK CH) 207	
8A-KCG-908-010			IB, INST, YH (E CK CH) -I	
8A-KCG-909-010			IB, YL (P) C 4670, 2670	AB
8A-KCG-910-010			IB, INST, YL (P) C 4670, 2670	AB
87-B10-141-010			NUT, 5 TYPE-2	AB
87-B10-143-010			UT1+5-15 W/O SLOT	AB
87-B10-144-010			W, 5.2-10-0.5	AB
87-B10-145-010			W-SPR, 5.3-8.5-1.5	AB
87-B10-216-010			U+2.6-4.0 ZINC BLK (BH M2.6)	AB
8Z-KC1-030-010			CASE, DFP -C	
8Z-KC1-231-110			HLDR, HALF -C	AB
8Z-KC1-232-010			KEY, REMOVE -C	AB
8Z-KC1-235-010			HLDR, REAR MTG	AB
8Z-KC1-244-010			S-SCREW, 5*6 TH+ TAPPING ST	AB
8Z-KC1-250-010			S-SCREW, HEXAGON	AB
8Z-KT1-616-010			CONN ASSY, 16P B52	AB

SCHEMATIC DIAGRAM - 1 (MAIN: 1 / 2)





SCHEMATIC DIAGRAM - 2 (MAIN: 2 / 2 CD)



- DRF A46
- RWC A48
- COIN A12
- COCK A13
- SQOUT A11
- WRQ A47

- CD RES A49

CD R	CD R
CD L	CD L
A11	SQ OUT
A12	COIN
A13	COCK
A46	DRF
A47	WRQ
A48	RWC
A49	CD RES
SL+	FEM+
SL-	FEM-
LM+	LM+
LM-	LM-
RW	RW
LP	LP UP
SW3	SW3
SW2	SW2
SW1	SW1
RST SW	INSIDE
8V	8V

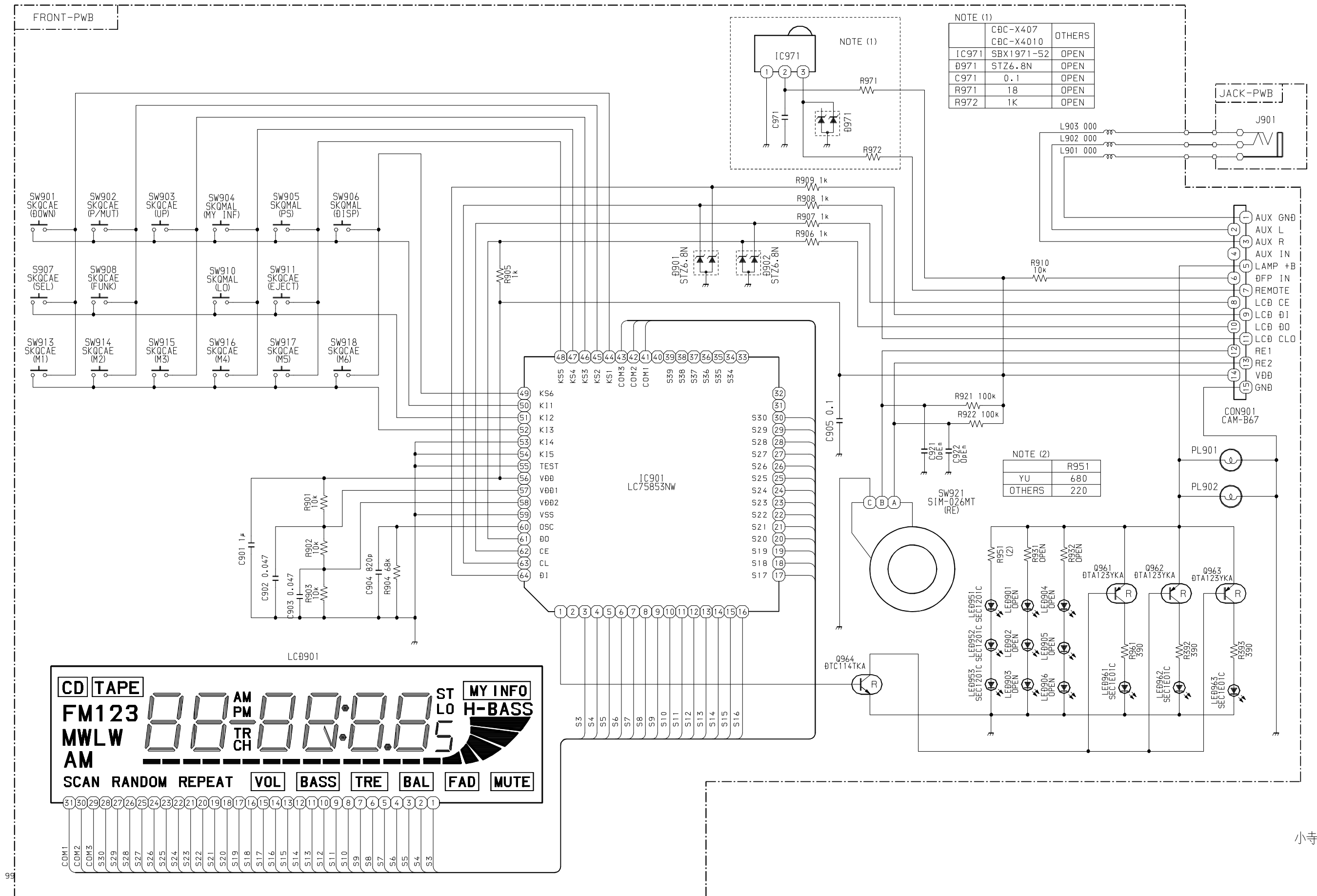
小寺

MP

AKC-16

CBC-X307

SCHEMATIC DIAGRAM - 3 (FRONT)



小寺



2-11, IKENOHATA 1-CHOME, TAITO-KU, TOKYO 110, JAPAN TEL:03 (3827) 3111