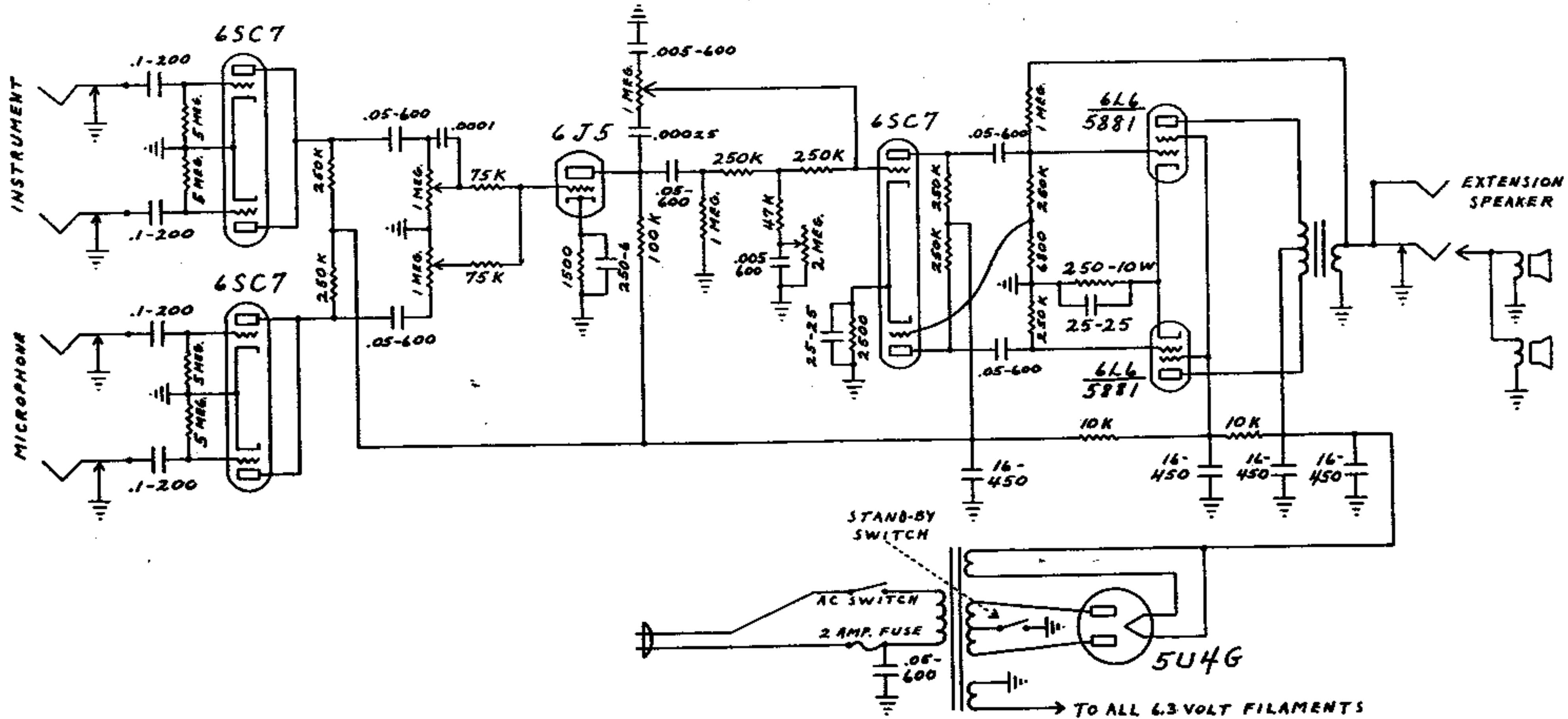


# FENDER "TWIN-AMP" SCHEMATIC

## MODEL 5C8



# FENDER "TWIN-AMP" LAYOUT

## MODEL 5C8

**NOTICE** ALL VOLTAGES  
 READ TO GROUND WITH ELECTRONIC  
 VOLTMETER. VALUES SHOWN  $\pm 20\%$

