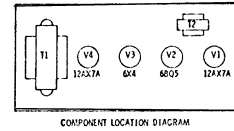
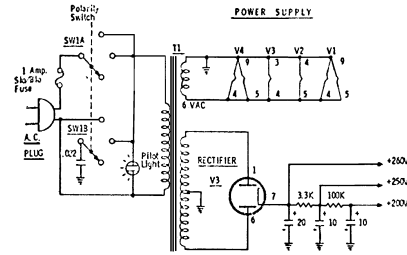


SKYLARK/TREMOLO

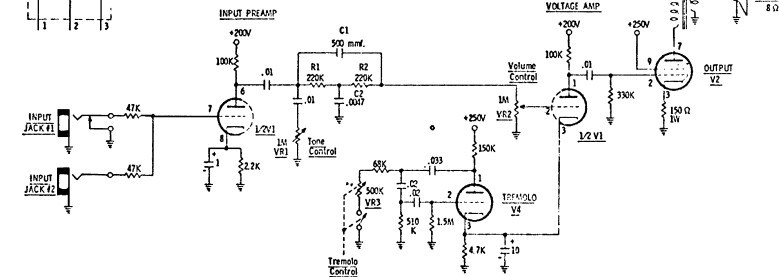
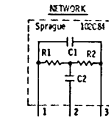
Gibson



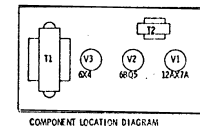
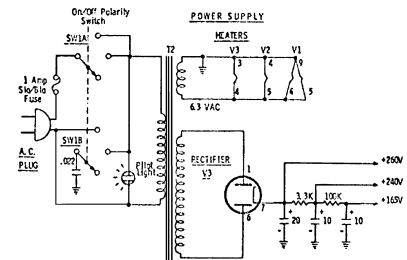
PIN	V1	V2	V3	V4
1	+16V	-	250 VAC	+215V
2	0	0	-	0
3	+2.2V	+1.2V	Heater	250V
4	Heater	Heater	Heater	Heater
5	Heater	Heater	250 VAC	Heater
6	+15V	-	-	-
7	0	+25V	+25V	-
8	+1.6V	-	-	-
9	Heater	+25V	Heater	-

- Pulse

- NOTES:
- All resistors 1/2 watt 10% unless otherwise specified.
 - All capacitors are in microfarads unless otherwise specified.
 - All voltages measured to ground with a Simpson 260 VOM.
 - See parts list for component part nos.



GIBSON
SKYLARK/TREMOLO
AMPLIFIER
Dwg. No. 1



PIN	V1	V2	V3
1	+13V	-	250 VAC
2	0	0	-
3	+1.9V	+2V	Heater
4	Heater	Heater	Heater
5	Heater	Heater	Heater
6	+15V	-	250 VAC
7	0	+25V	+25V
8	+1.9V	-	-
9	Heater	+25V	Heater

- NOTES:
- All resistors 1/2 watt 10% unless otherwise specified.
 - All capacitors are in microfarads unless otherwise specified.
 - All voltages measured to ground with a Simpson 260 VOM.
 - See parts list for component part nos.

