

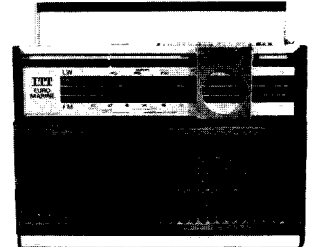


SERVICE-INFORMATION

EURO MARINE

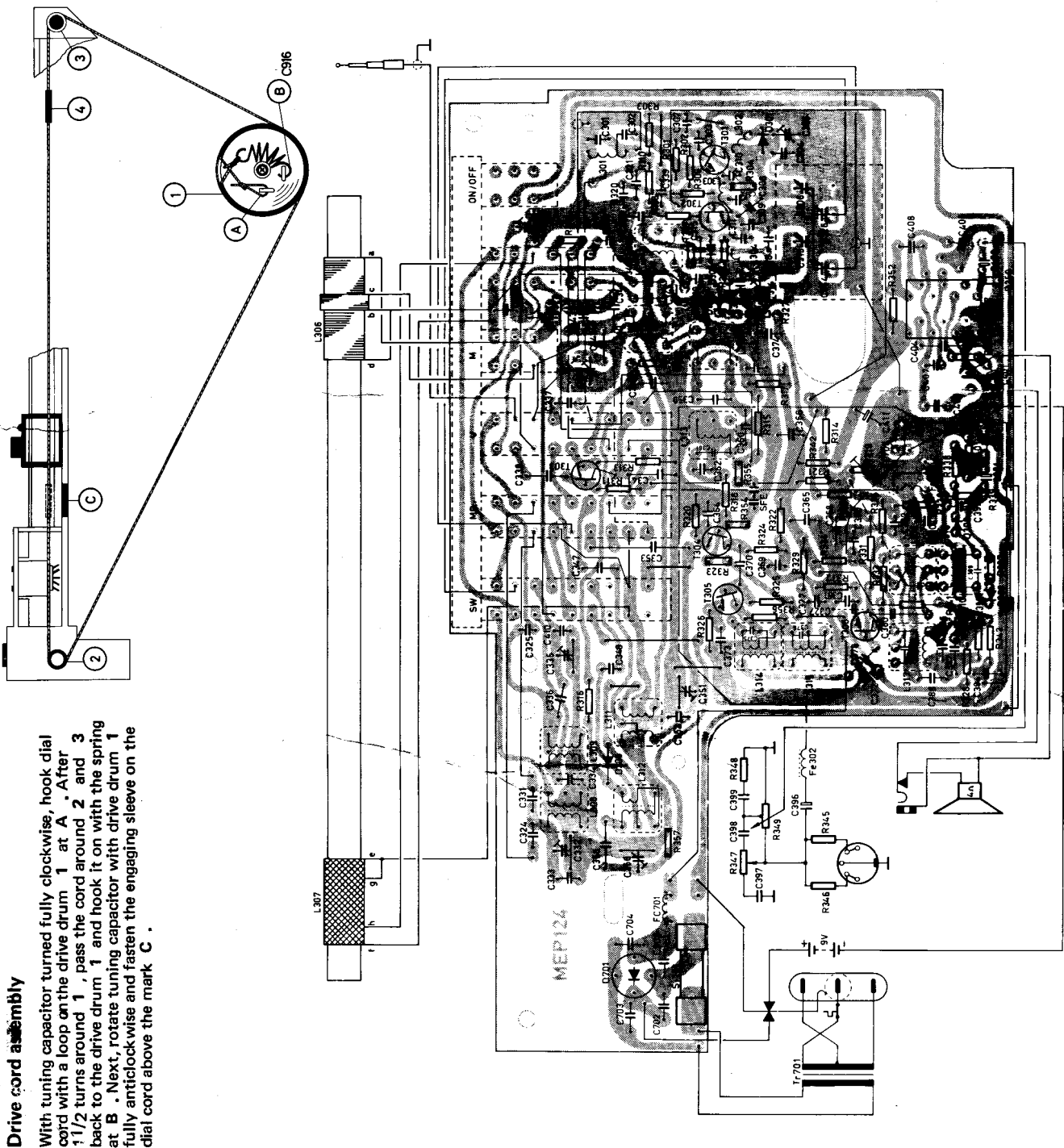
Typ 5213 02 33 Grill silver

Typ 5213 02 35 Grill teak



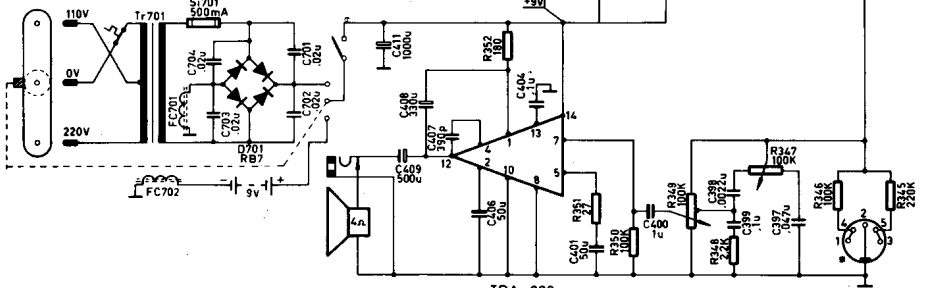
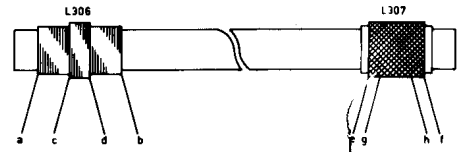
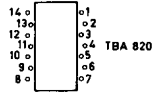
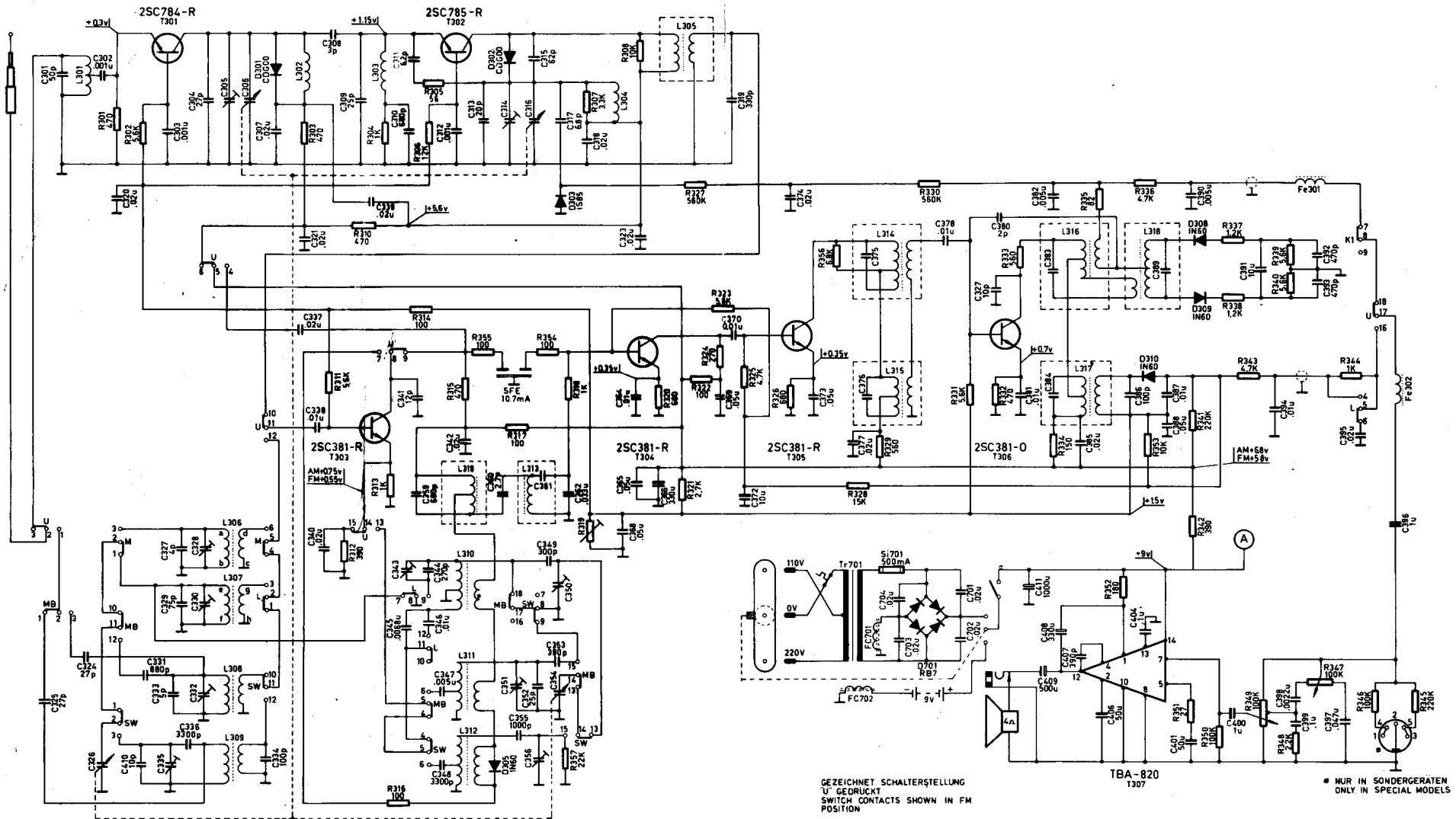
Technical Specifications

Power Supply	240 V AC/9 V = (6 x 1.5 V; IEC R 14)	Wave Ranges	MW	525 - 1605 kHz	588 - 185 m
Circuits	FM 7; AM 6		FM	87.5 - 104 MHz	3.42 - 2.88 m
Transistors	6; 1 IC		SW 1	1.4 - 4.0 MHz	214 - 75 m
Diodes	8		SW 2	5.8 - 16 MHz	51.7 - 18.8 m
IF	AM 470 kHz; FM 10.7 MHz	Power Output	LW	145 - 260 kHz	1164 - 2070 m
Weight	1.2 kg approx.				
		Loudspeaker			
		Dimensions			



Drive cord assembly

With tuning capacitor turned fully clockwise, hook dial cord with a loop on the drive drum 1 at A. After 1/2 turns around 1, pass the cord around 2 and 3 back to the drive drum 1 and hook it on with the spring at B. Next, rotate tuning capacitor with drive drum 1 fully anticlockwise and fasten the engaging sleeve on the dial cord above the mark C.



GEZEICHNET SCHALTERSTELLUNG
U' GEDRÜCKT
SWITCH CONTACTS SHOWN IN FM
POSITION

• NUR IN SONDERGERÄTEN
ONLY IN SPECIAL MODELS

ALLE WIDERSTÄNDE 1/8 WATT
ALL RESISTORS 1/8 WATT

SW	MB	U	M	L	ON OFF
10	11	12	13	14	15
16	17	18	19	20	21
22	23	24	25	26	27
28	29	30	31	32	33
34	35	36	37	38	39
40	41	42	43	44	45
46	47	48	49	50	51
52	53	54	55	56	57
58	59	60	61	62	63
64	65	66	67	68	69
70	71	72	73	74	75
76	77	78	79	80	81
82	83	84	85	86	87
88	89	90	91	92	93
94	95	96	97	98	99
100	101	102	103	104	105

WELLENBEREICHE WAVE RANGES	
SW	5.8 - 16 MHz
MB	1.8 - 4.0 MHz
U	87.5 - 10.4 MHz
M	510 - 1620 kHz
L	145 - 260 kHz

ALLE ⊙ SPANNUNGEN GEGEN ⊕ GEMESSEN
(SCHALTERSTELLUNG U, K, W)
ALLE ⊙ SPANNUNGEN GEGEN ⊥ GEMESSEN
ALL ⊙ VOLTAGES MEASURED TO ⊕
ALL ⊙ VOLTAGES MEASURED TO ⊥
SWITCH IN FM POSITION