



NA88

Car Audio System Player

INSTRUCTION MANUAL

USB SD AUX-IN BT

2-WAY CONTROL APPS RADIO

USB 1A Smart Phone Battery Charge

Safety

WARNING

Stop the car before operating the unit.

Important to know...

- ★ To prevent a short circuit, never put or leave any metallic objects (such as coins or metal tools) inside the unit.
- ★ **Caution:** Adjust the volume so that you can hear sounds outside the car. Driving with the volume too high may cause an accident.
- ★ **Condensation:** When the car is air-conditioned, moisture may collect on the laser lens. This may cause disc read errors. In this case, remove the disc and wait for the moisture to evaporate.
- ★ The illustrations in this manual are examples used to explain more clearly how the controls are used. Therefore, what appears on the illustrations may differ from what appears on the actual equipment.
- ★ If you experience problems during installation, consult your Nakamichi dealer.
- ★ When you purchase external components, check with your Nakamichi dealer to make sure that they work with your model and in your area.

Maintenance

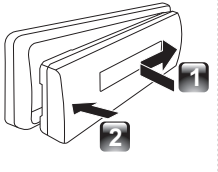
Cleaning the unit: Wipe off the dirt on the panel with a dry silicon or soft cloth. Failure to observe this precaution may result in damage to the monitor or unit.

Cleaning the connector: Wipe off dirt on the connector of the unit and faceplate. Use a cotton swab or cloth.

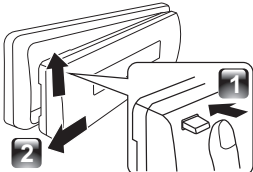
Preparation

How to attach/detach the faceplate

Attach



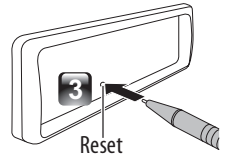
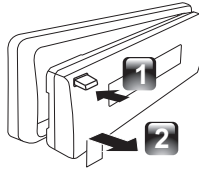
Detach



- ★ Do not expose the faceplate to direct sunlight, excessive heat, or humidity. Also avoid places with too much dust or the possibility of water splashing.
- ★ Keep the faceplate in its casing while detached.
- ★ The faceplate is a precision piece of equipment and can be damaged by shocks or jolts.

- ★ To prevent deterioration, do not touch the terminals of the unit and faceplate with your fingers.

How to reset your unit



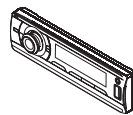
- ★ If this unit fails to operate properly, press the reset button.
- ★ The unit returns to factory settings when the reset button is pressed.

What's in the box

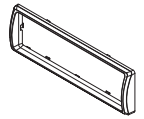
Check and identify the contents of your package:



Main unit
(with sleeve)



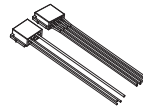
Front panel



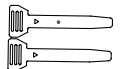
Trim plate



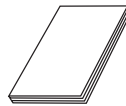
Carrying case
(for front panel)



ISO male
connector



Disassembly tool
(2pcs)



User manual

Installation / Connection

Basic Procedure

- 1 Remove the key from the ignition switch, then disconnect the \ominus terminal of the car battery.
- 2 Make proper input and output wire connections.
- 3 Install the unit to your car.
- 4 Reconnect the \ominus terminal of the car battery.
- 5 Reset the unit.

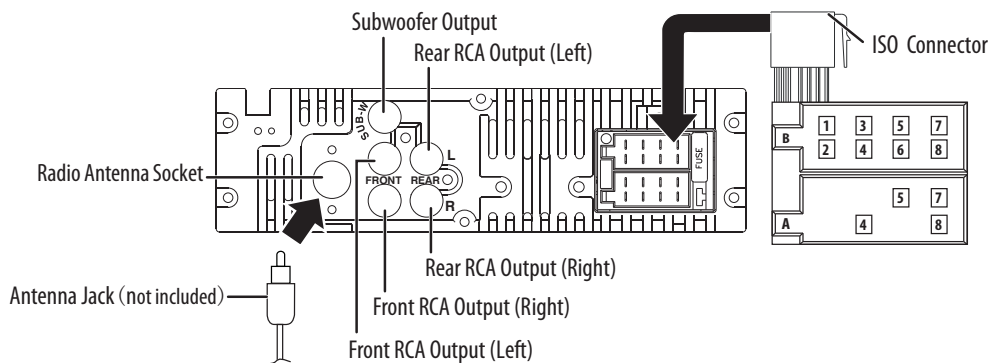
Warning

- ★ The unit can only be installed in a car with a 12V DC power supply, negative ground.
- ★ If you connect the ignition wire (red) and the battery wire (yellow) to the car chassis (ground), you may cause a short circuit, that in turn may start a fire. Always connect those wires to the power source running through the fuse box.
- ★ Disconnect the battery's negative terminal and make all electrical connections before installing the unit.
- ★ Insulate unconnected wires with vinyl tape or other similar material. To prevent a short circuit, do not remove the caps on the ends of the unconnected wires or the terminals.
- ★ Be sure to ground this unit to the car's chassis again after installation.
- ★ If the power is not turned ON, the speaker wire may have a short-circuit or touched the chassis of the vehicle and the protection function may have been activated. Therefore, the speaker wire should be checked.

Caution

- ★ If your car's ignition does not have an ACC position, connect the ignition wires to a power source that can be turned on and off with the ignition key. If you connect the ignition wire to a power source with a constant voltage supply, as with battery wires, the battery may die.
- ★ Install this unit in the console of your vehicle. Make sure the faceplate will not hit the lid of the console (if any) when closing and opening.
- ★ After the unit is installed, check whether the brake lamps, blinkers, wipers, etc. on the car are working properly.
- ★ Mount the unit so that the mounting angle is 30° or less.
- ★ If the fuse blows, first make sure the wires are not touching to cause a short circuit, then replace the old fuse with one that has the same rating.
- ★ Connect the speaker wires correctly to the terminals to which they correspond. The unit may be damaged or fail to work if you share the \ominus wires or ground them to any metal part in the car.
- ★ When only two speakers are being connected to the system, connect the connectors either to both the front output terminals or to both the rear output terminals (do not mix front and rear).
- ★ Mounting and wiring this product requires skills and experience. For safety's sake, leave this work to professionals. If you experience problems during installation, consult your Nakamichi dealer.

Wiring Connection

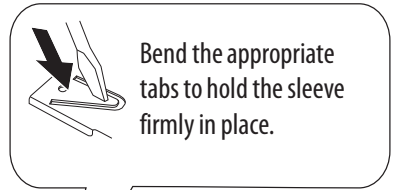
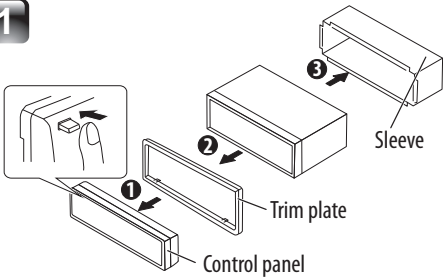


ISO Connector Wiring Chart

Pin	Color and function		Pin	Color and function	
A4	Yellow	Battery(+)	B1/B2	Violet \oplus / Violet/Black \ominus	Right rear speaker
A5	Blue	Connect to system control terminal of the power AMP or auto antenna relay control terminal (Max 150MA 12VDC)	B3/B4	Grey \oplus / Grey/Black \ominus	Right front speaker
A7	Red	Ignition(ACC)	B5/B6	White \oplus / White/Black \ominus	Left front speaker
A8	Black	Ground	B7/B8	Green \oplus / Green/Black \ominus	Left rear speaker

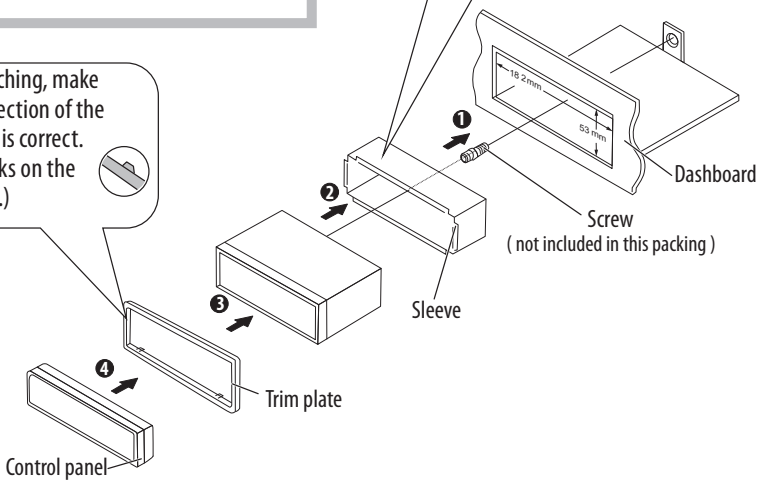
Installing the unit

1



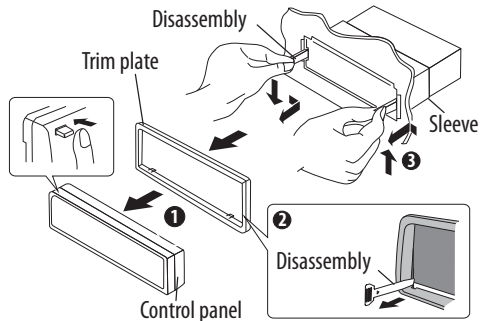
2

Before attaching, make sure the direction of the escutcheon is correct. (Wider hooks on the bottom side.)

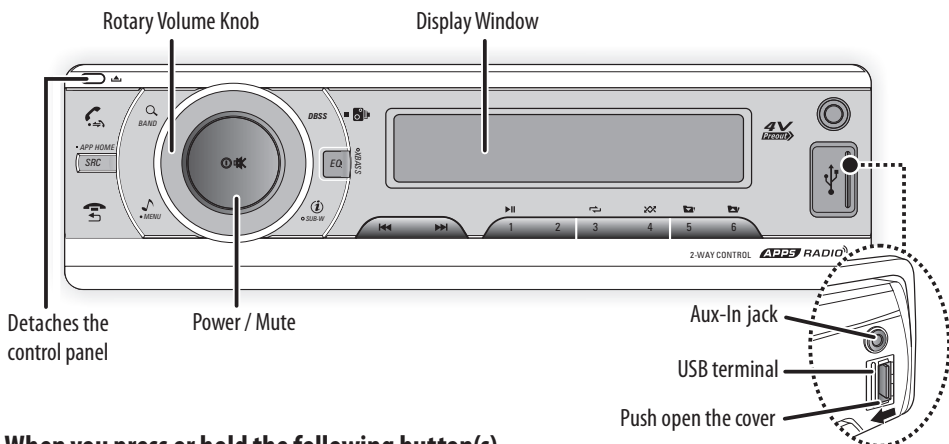


Removing the unit

- 1 Detach the control panel.
- 2 Engage the catch pin on the removal tools into the holes on both sides of the escutcheon, then pull it out.
- 3 Insert the disassembly tools deeply into the slots on each side, then follow the arrows instructions as shown on the right.





Basic Operation



When you press or hold the following button(s)...

Main unit	General operation
SRC • APP HOME	<ul style="list-style-type: none"> Select the available sources (Radio, AUX IN, USB, SD or BT AUDIO), if the power is turned on. Press & hold the "APP HOME" Button to go to the app home interface. Use the volume knob to select the desired function on the app and press the center of the volume knob to confirm the selection.
Rotatory Volume knob	Rotate it to increase or decrease the volume. Select items.
 Power / Mute	<ul style="list-style-type: none"> Turn mute or restore volume. Turn the unit on. Press and hold again to turn the unit off. Confirms selection.
 BAND	<ul style="list-style-type: none"> Select the FM bands (FM1/ FM2/ FM3) or AM1 (MW1) / AM2 (MW2) . Under media playback to access into search mode. Press and hold to activate the Auto Store function.
	Pause/resume playback of a USB / SD device.
	<ul style="list-style-type: none"> Under Radio mode to enter into the Auto Seek mode, press and hold to enter into the Manual Seek mode. Under USB /SD Media playback mode to skip track / file, press and hold to fast forward / backward.
 MENU	To access into the Audio Menu mode, press and hold to enter into the System Menu mode.
DBSS	<ul style="list-style-type: none"> Turn On or Off dynamic bass boost sound. Once you find Still Speed Camera, Traffic Light Camera, etc, you can record the CAMERA location by hold pressing the camera button. If you re-enter same location within 200 meters way at high speed, it will sound an alarm until you reduce the speed and it will stop the alarm once the speed is slowed down. Noted: 1) If click STOP button on the alarm box, the alarm sound & alarm box will vanish and will not show again, Camera Alert will be off but the Camera Save Location function will be still on. Noted: 2) This function will only work when the apps is turned on, GPS Location Service must be turned on and can receive GPS signal normally. Tips: You can delete camera data record in setting.
 • SUB-W	<ul style="list-style-type: none"> Press to view the Clock. Press & hold to turn On or Off the Subwoofer function. Under Media playback mode to view play informations.
EQ / XBASS	<ul style="list-style-type: none"> To adjust the EQ (Preset Equalizer) setting. Turn On or Off the Xbass booster function.
	<ul style="list-style-type: none"> To answer /accept the call. During the talking, press and hold to transfer the call back to mobile phone.
	<ul style="list-style-type: none"> To reject / end the call. Returns to the previous item.

Function Settings

- 1 Press  **MENU** to access into the **[AUDIO MENU]** mode, press and hold to enter into the **[MENU]** mode.
- 2 Press  **MENU** repeatedly to select the item to be adjusted.
- 3 Turn the encoder volume knob to select a value / option.

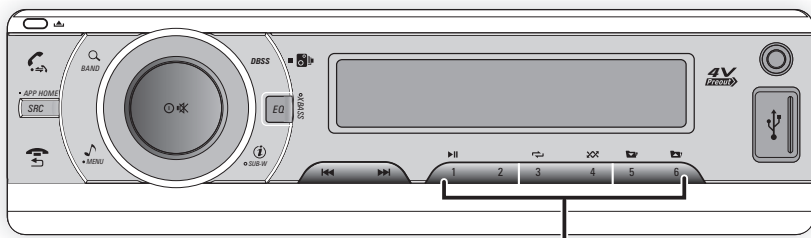
[AUDIO MENU]...

Item	Selectable Setting
SUBWOOFER ADJUST	
SUBWOOFER	Turn On or off this Subwoofer function.
SUBWOOFER LPF	Subwoofer low pass filter range: 80 / 120 / 160.
SUBWOOFER LEVEL	Adjust the level 0 to 12.
FADER	Adjust the fader between the front and rear speakers from 12R (full rear) to 12F (full front).
BALANCE	Adjust the balance between the right and left speakers from 12R (full right) to 12L (full left).
BASS ADJUST	
BASS LEVEL	Adjust the level -7 to +7.
MIDDLE ADJUST	
MIDDLE LEVEL	Adjust the level -7 to +7.
TREBLE ADJUST	
TREBLE LEVEL	Adjust the level -7 to +7.
GPS VOICE MIX	
GPS VOICE MIX	Turn On or Off this GPS Voice Mix function. (If it is on, When listening radio or USB/SD audio, user can start up, Google Navi at the same time. The Google Navi voice will mix together with radio music without stopping the radio music.)
GPS VOICE MIX LEVEL	Adjust the level 0 to +12.
Note: This GPS VOICE MIX function will work only when the app is turned on.	

[MENU]...

Item	Selectable Setting
CLOCK	
CLOCK SET	Adjust the Hours and Minutes
CLOCK FORMAT	Select the time format 12H or 24H
BEEP TONE	Turn On or Off this beep sound
BT MODE	
BT MODE	Check the BT connected status.
BT DISCONNECTED	Check the BT Disconnected status.

Listening to the Radio



- Hold for about 2 seconds to memorize the current station .
- Press briefly to recall memorized station.

- 1 Press **BAND** repeatedly to a band (FM1, FM2, FM3, AM1(MW1) or AM2 (MW2)). Press and hold to activate the Auto Store function.
- 2 Press **SEARCH** to search for a station.
- 3 Press **SUB-W** repeatedly to view RDS received information.

Adjust [MENU] mode settings

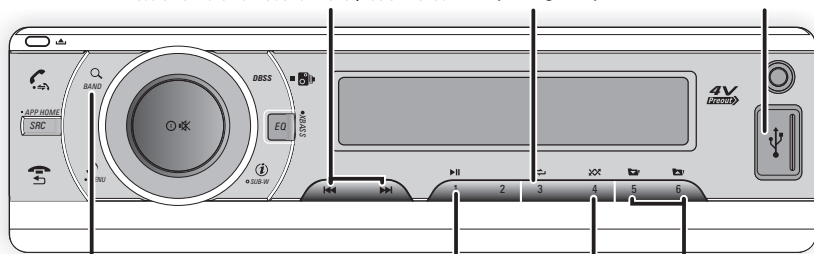
While listening to the radio...

- 1 Press and hold **MENU** to enter into the [MENU] mode.
- 2 Press **MENU** repeatedly to select the item to be adjusted.
- 3 Turn the encoder volume knob to select a value / option.

Item	Selectable Setting
AUTO STORE	Press the POWER to access into Auto Store mode, the six strongest stations of the selected band are saved in preset channel automatically: FM1, FM2, FM3(1-6), AM1, AM2.
RDS On/Off	Turn On or Off the RDS function.
PTY (Program Type)	Once into the PTY mode, press the POWER get into program type item, and rotating encoder volume knob to selected category. <ul style="list-style-type: none"> ■ Available Program Type: POP M; ROCK M; EASY M; LIGHT M; CLASSICS; OTHER M; WEATHER; FINANCE; CHILDREN; SOCIAL; RELIGION; PHONE IN; TRAVEL; LEISURE; JAZZ M; COUNTRY; NATION M; OLDIES M; FOLK M; DOCUMENT; TEST; ALARM; NEWS; AFFAIRS; INFO; SPORT; EDUCATE; DRAMA; CULTURE; SCIENCE; VARIED;
AF (Alternate Frequencies)	<ul style="list-style-type: none"> ■ ON: The unit will be searches for another station with stronger signal, but with the same program identification as the current station automatically. ■ OFF: Cancel
TA (Traffic Announcement)	<ul style="list-style-type: none"> ■ ON: When there is traffic announcement, the unit switches to the tuner mode (regardless of the current mode) and begins to broadcast the announcemet on traffic conditions. When the trafficannouncement is over, it returns to the previous mode. ■ OFF: Traffic announcement does not cut in.
CLOCK On/Off	Turn On or Off the RDS Clock Time
LOCAL SEEK	To receive more radio stations or only stations with strong signal, you can adjust the radio sensitivity.
AREA	Select suitable country region of the radio: USA; EUROPE; RUSSIA(Oirt);AUST (Australia); M-EAST; ASIA; JAPAN;LATIN;


Listening to a USB/SD device

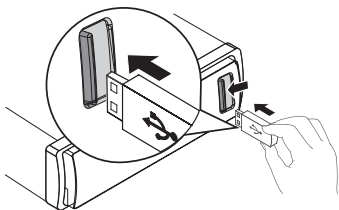
- Press to select a track / file.
- Press and hold for fast forward / backward.
- Press to repeat one track, press again repeat a folder.
- USB terminal



- Press into search mode
- Press to pause. Press again to resume playback.
- Press to move next/previous folder.
- Press to start random play, press again to random a folder.

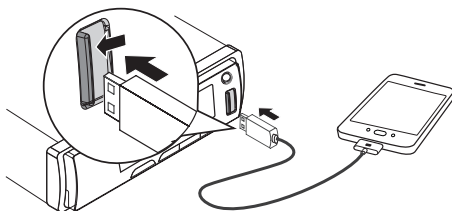
Playing a USB device

- 1 Slide the USB socket cover marked  to the left.
- 2 Insert the USB device into the USB socket.
- 3 Press the "SRC" button to select the USB mode to start playing.




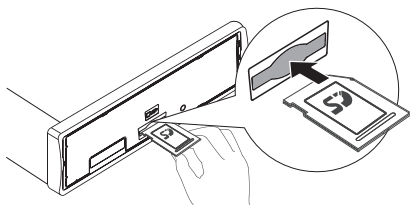
USB Smart Phone 1A charging

Once the iPhone or Smart Phone is connected and recognized, the iPhone or Smart Phone begins to Automatic charging.

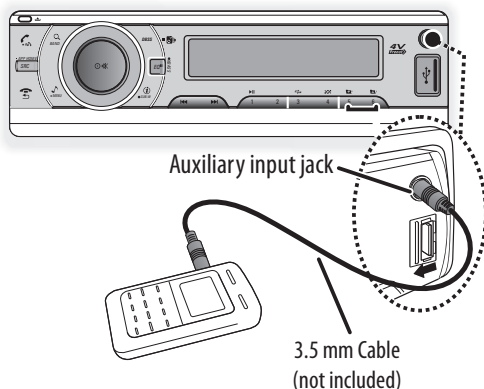


Playing a SD memory card

- 1 Press the Panel  (Release) button.
- 2 Push the left side of the panel rightward
- 3 Insert the card into the card slot.
- 4 Close the front panel.
- 5 Press the "SRC" button to select the SD mode to start playing.



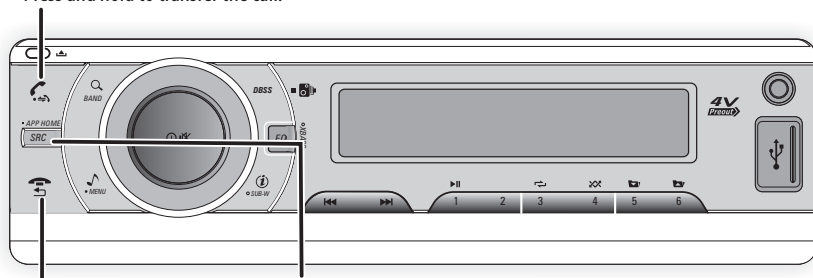
Listening to the other external components



- 1 Press the **SRC** to select AUX-IN mode.
- 2 Turn on the external component and start playing.

Operation of Bluetooth

- Press to answer / accept the call.
- Press and hold to transfer the call.



Press to reject / end the call.

Press to change to "BT AUDIO" mode

You can make or receive phone calls with Bluetooth-enabled phones through the unit. You can also listen to music from a Bluetooth-enabled device.

Getting Started

Before use the Bluetooth device, you need to pair the device to the unit. Pairing needs only to be done once.

Pairing the Bluetooth devices

- 1 Open your mobile phone and switch bluetooth on.
- 2 Search for other bluetooth device with your device.
- 3 Select "Nakamichi" in the pairing list.
- 4 Input the password "0000"
- 5 [PAIR OK] will be displayed on the screen if pairing is successful, and the paired device will connect to the car audio system automatically.

Disconnect the bluetooth

- 1 Press and hold MENU to enter into the [MENU] mode.
- 2 Once the [CONNECT] is displayed, press to activate the manual Disconnect mode.

Re-connect the bluetooth

- 1 Press and hold MENU to enter into the [MENU] mode.
- 2 Once the [DIS-CON →] is displayed, press to activate the manual Re-connect mode.

Making a Call

You can dial number through the mobile phone.

- 1 Use the Mobile Phone to dial and make an outgoing call.
- 2 Once completed the dialing, [CALLING] is displayed.

To redial number

- 1 Press on front panel to redial.
- 2 The unit will display [CALLING], and the unit starts dialing the number dialed last time.

Remark:

To make an outgoing call on this unit, the bluetooth connection between the unit and the phone must be active.

Receiving a Call

- 1 If there is incoming call, the phone number is displayed. if the incoming call has no phone number, [PHONE IN] is displayed.
- 2 Press to answer / accept the call.
- 3 When conversation ends, press to terminate the call.

Call Transfer

You can transfer voice from speaker to mobile phones during call.

During talking, press and hold voice transfers from speaker to mobile phone.

Bluetooth Audio Streaming A2DP

If the connected Bluetooth device supports Advanced Audio Distribution Profile (A2DP), you can listen to the music stored on the device through the unit. If the device also supports Audio Video Remote Control Profile (AVRCP) profile, you can use the control on the unit or its remote control to play music stored on the device.

- 1 Press SRC repeatedly to select [BT AUDIO].
- 2 Press to start play, press it again to pause.
- 3 To track up/down, press / .

Apps Radio

About Apps

This unit is providing an easy-to-use and 2- way wireless control App. To enable the exciting features such as direct radio control, mobile phone music entertainment, google navigation and speed camera warning, simply download the free, etc. App and get all of the exciting benefits of Nakamichi Car Audio has to offer. It is a state of the art innovation that renders a safe-driving and wonderful experience on road.

Install “Nakamichi” or “CARADIO” App

From QR code:

1. Make sure your smart phone has installed the QR code camera.
2. Turn on the QR code camera and scan the QR code,you will get the link to download the “Nakamichi” or “CARADIO”App .



For Android:

Download and install “Nakamichi” App from Google play store.

For iPhone:


Download and install“CARADIO” App from App store.

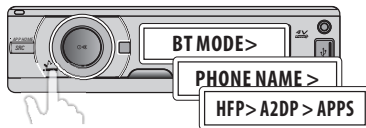
Note:

For the details operation of the 2-Way APP control function, Please refer to the Quick Start Guide(QSG)

View The BT Connection Status

Check BT connection status via CAR HEAD UNIT:

- 1) If BT icon  is light up on the display, Car Head Unit is BT connected with Smart phone.
- 2) Check the profile connection status by entering into Car Head Unit “MENU” access to BT MODE, the following info will be scrolling on the display.
 - Connected Smart Phone Device name.
 - “HFP” (Handfree Profile is connected)
 - “A2DP” --> Audio Streaming Porfile is connected.
 - “APPS” ---> APPS Profile is connected.



Note:

If it doesn't display “APPS” on above display, the 2-Way control has not been connected yet. Please try the BT connection again.

Product Information

General

Power Supply: 12V DC (10.5-14.4V), negative ground

Fuse: 15A

Suitable Speaker Impedance: 4 - 8Ω

Aux-In level: 500mV

Audio Section

Maximum Power Output: Mosfet 50W x 4 Channels

Continous Power Output: 22W x 4 RMS

Pre-AMP Output Voltage: 4V

Subwoofer Output Voltage: 3 V

FM tuner section

Frequency Range: 87.5 - 108MHz

Usable Sensitivity: Better than 15dB at S/N 30dB

AM tuner section

Frequency Range: 522 - 1620KHz

Usable Sensitivity: Better than 45dB at S/N 26dB

USB devices

USB Flash Memory: USB 1.1 & 2.0 Compatible

Memory Card

Support type of memory card: SD/SDHC

Bluetooth

Output power: Class 2

Frequency band: 2.4000GHz-2.4835GHz ISM Band

Range: 3 meters (free space)

Standard: Bluetooth 2.0 specification

About Audio file

- USB or memory file system: FAT16, FAT32
- MP3/WMA bit rate: 32-320kbps and variable bit rate
- MP3 sampling frequencies: 8-48kHz
- WMA sampling frequencies: 32kHz, 44.1kHz, 48kHz
- ID3 tag v1.0 or later

USB Smart Phone 1A charging

Output Voltage: 5V DC

Output Current: 1000 mA (1A)

Supports Apps

Android Phone: Nakamichi

iPhone: Caradio



 Nakamichi®

www.nakamichicaraudio.com