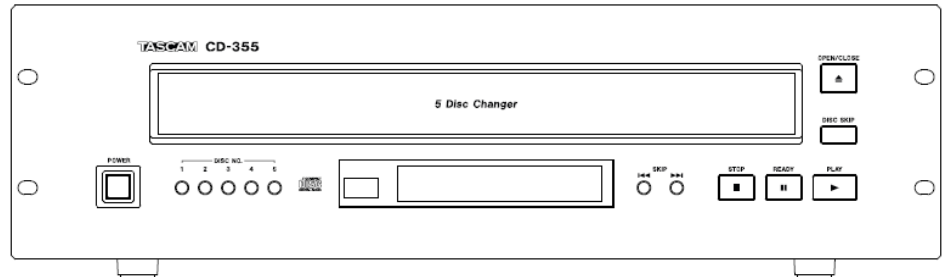


PRODUCT OVERVIEW

The TASCAM CD-355 is an affordable “rack-mountable” solution for schools and commercial installations where extended CD playback is required. The five-disc carousel type CD player supports CD, CD-R/RW, and MP3 playback and



is equipped with both digital (SPDIF) optical/coaxial and analog balanced (XLR) and unbalanced (RCA) outputs. Playback and Repeat modes include Intro Check, Shuffle Play, Single Track Repeat, and All Track Repeat.

MSRP \$ 399.00

3-U Rack-Mountable

Carousel Type 5CD changer

Support CD, CD-R/RW

MP3 Playback

Analog Balanced (XLR) and Unbalanced (RCA) Output

Optical and Coaxial Digital Outputs (SPDIF)

Five-Disc Direct Access Keys (Front Panel & Remote)

MP3 ID3TAG display

Single Track or All Track Repeat

Intro Check Play

Shuffle Play

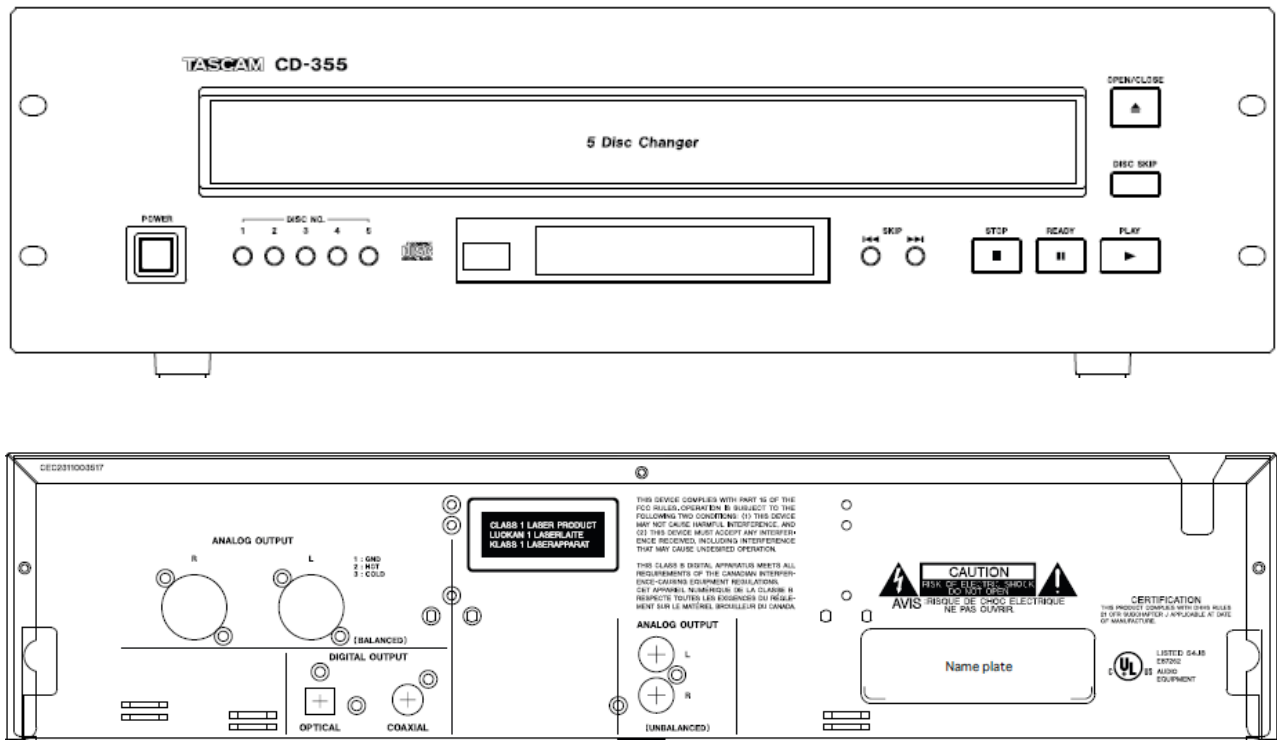
Full Function Remote Control w/ 10-digit Direct Access Keys (Included)

Fluorescent Display w/Music Calendar

CONSULTANT'S AND SYSTEM DESIGN SPECIFICATIONS

The TASCAM CD-355 is a 3U rack-mountable multi-disk (5-disc) player with a powered loading tray and supports CD, CD-R/RW, and MP3 playback. The rear panel is equipped with analog balanced (XLR) and unbalanced (RCA) outputs. SPDIF Digital Outputs also available via Optical and Coaxial Jacks. Playback and Repeat Modes include Shuffle Play, Intro Check Play, Single Track Repeat and All Track Repeat. Direct access keys to the individual discs is provided on the CD-355's front panel and ten-digit direct access keys are available on the included IR remote control.

PANELS



SPECIFICATIONS

Oversampling	8x
D/A	1-bit Dual D/A Converter
Channel Separation:	More than 85dB (1 kHz)
OUTPUTS	
Analog	RCA (Unbalanced)
	XLR (Balanced)
Digital	Optical (SPDIF)
	Coaxial (SPDIF)
Frequency response:	20 Hz to 20 kHz (+/-2dB)
Signal to noise ratio:	More than 100 dB
Total harmonic distortion:	Less than .02% (1 kHz)
Power requirements:	AC 120V, 60Hz (US, Canada, Mexico)
	AC 230V, 50Hz (Europe)
Power consumption:	12W
Dimensions (W x H x D):	482 x 131 x 368 (mm)
Weight:	7.2 kg