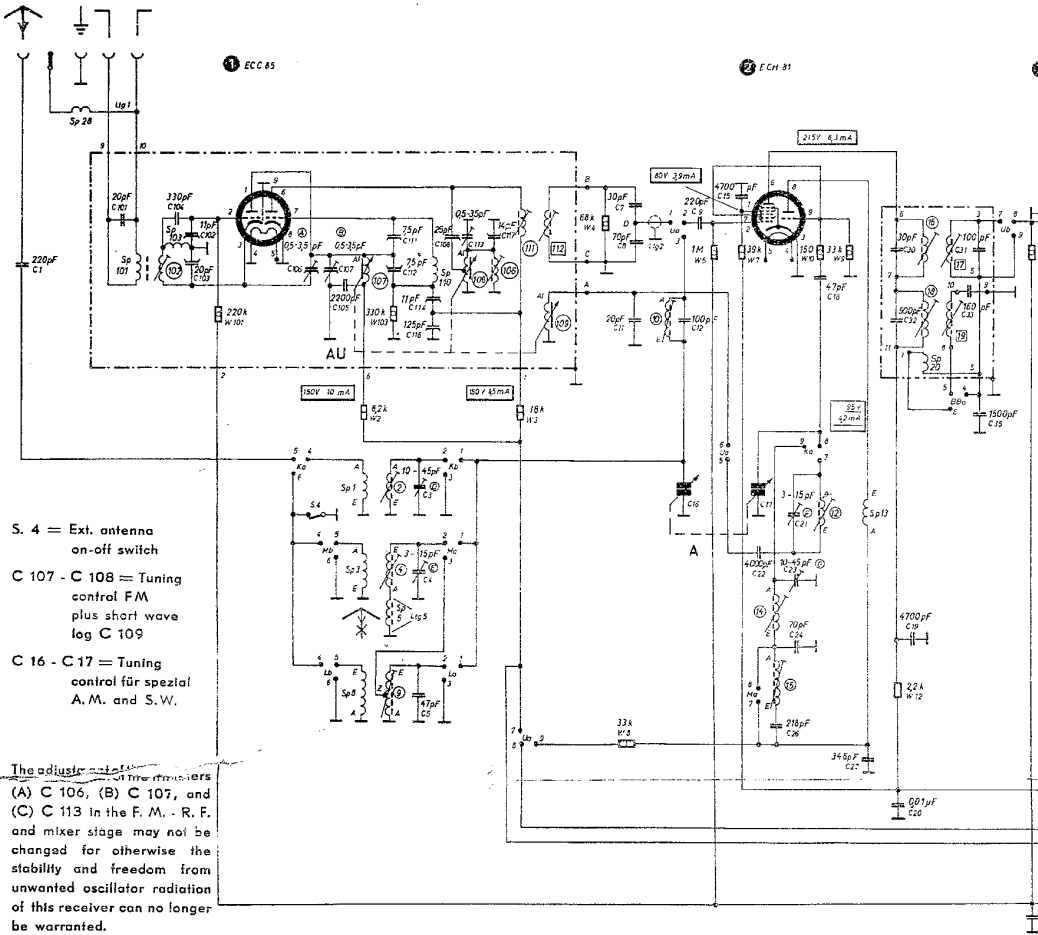




Schematic-circuit diagram of TELEFUNKEN A. C. superhetero.

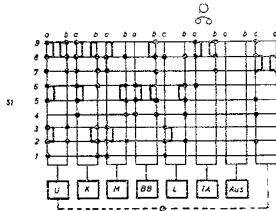


- S. 4 = Ext. antenna on-off switch
- C 107 - C 108 = Tuning control FM plus short wave log C 109
- C 16 - C 17 = Tuning control für spezial A.M. and S.W.

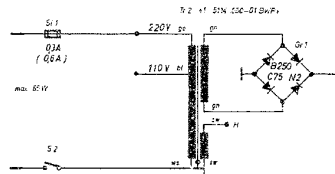
The adjustment of the trimmers (A) C 106, (B) C 107, and (C) C 113 in the F. M. - R. F. and mixer stage may not be changed for otherwise the stability and freedom from unwanted oscillator radiation of this receiver can no longer be warranted.

If a complete re-alignment of the F. M. - R. F. and mixer stage becomes necessary due to mechanical or electrical repairing, the alignment instructions S 3096 for the R. F. and mixer stage should be strictly followed.

Press-button assembly



S = Solo, J = Jazz, O = Orchester, B = Bass

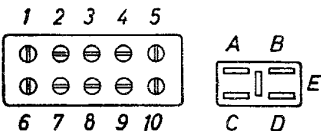


Power consumption: max. 65 watts

Wave ranges	
U = F.M.	POWER ON : 88-108 Mc
K = S.W.	: 16.2-51 m
M = A.M.	: 1620-515 kc
L = SPECIAL	: 345-145 kc

I. F. A. M. = 460 kc
F. M. = 10.7 Mc

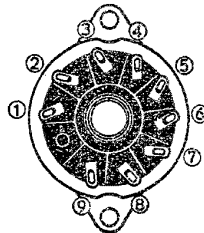
The contact bridges are shown in unoperated position. When pressing a button, the corresponding slider with its contact bridges will move in the direction of the arrow. The slider at the extreme right, however, connected to the slider marked "U" moves in opposite direction when operating the button "U".



F. M. tuner-converter-unit terminal-boards

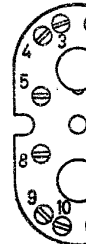
All tensions indicated in the diagram are measured against mass with a voltmeter of 50 k/ohms per volt.

All measurements with wave switch in position F. M. - Underlined values = wave switch in position A. M.



Pico 9

Tubes 1 2 3 4 5 6
 Tube sockets: bottom view



I. F. trans bottom